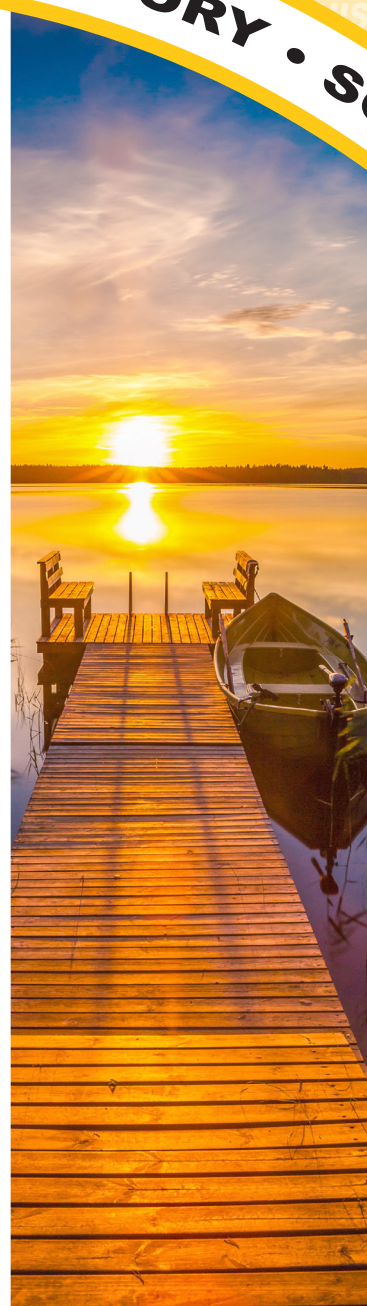
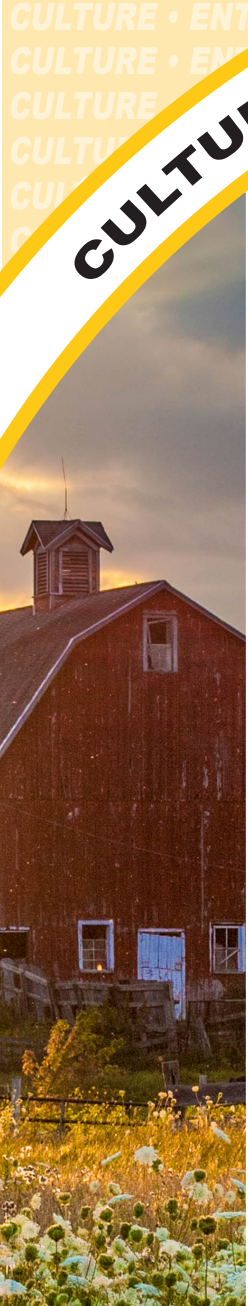


2021

Exploring THE TRI-STATES



CULTURE • ENTERTAINMENT • HISTORY • SCENERY



FREE COPY

The choice is yours.



PLATTEVILLE • GALENA • LANCASTER



Montfort Location

501 US 18 | Montfort, WI

We have all your Camping
and Recreational needs.

- ★ Grocery Items
- ★ Snacks
- ★ Cold Drinks
- ★ Cold Beer
- ★ Ice
- ★ Hot Food
- ★ Ice Cream
- ★ Toiletries
- ★ 91 Octane Gas
- ★ 2 Cycle Oil



Convenience Stores
1486 Industrial Park Rd | Lancaster
608-723-4139
allegiantoilcompany.com

Platteville Location

190 N 2nd St | Platteville, WI

We are on the
ATV Route.

- ★ Cold Drinks
- ★ Snacks
- ★ Ice
- ★ Ice Cream
- ★ Propane Cylinders
- ★ Gas
- ★ Diesel

We have Straight 87 Non Ethanol Gas at our
Bulk Plant on Means Drive



Come Explore With Us!

Dear Friends:

Welcome to the Tri-States! Whether you're here for business or pleasure, we want you to consider us home!

You will find the Tri-State's hospitality second to none. We offer first class hotel accommodations to fit every budget and hundreds of restaurants to suit every taste. If you're looking for entertainment, you will find the finest in live theatre, music for listening and dancing, frequent special events and appearances by local and famous performers.

Don't miss the area museums where you will discover the exciting past that has made the Tri-States a center of commerce and education. We urge you to rest and revitalize in our beautiful countryside.

As with any gem, you have to examine the Tri-States closely to appreciate its many facets. Enjoy your visit and be sure to come home again to the Tri-States!

S E R V I N G O U R C O M M U N I T Y S I N C E 1 8 9 9

THE PLATTEVILLE JOURNAL

250 E. Main St., P.O. Box 266 • Platteville, WI 53818

Phone: (608)348-3006 • Fax: (608) 348-7979 • E-mail: ads@theplattevillejournal.com

Table of Contents

Area Map / Tourist Information.....	4	Gays Mills.....	25
Area State Parks / Forests	40	Grant County ATV Map.....	29
Avoca.....	5	Lancaster	26-28
Bagley.....	6-7	Mineral Point	30-32
Belmont.....	8	Montfort.....	33
Bloomington	8	Muscoda	33-34
Blue River	9	Platteville.....	2, 36-41, 59, 60
Boscobel.....	9-16	Potosi.....	42-43
Cassville.....	17-19	Richland Center.....	44-49
Darlington	20-21	Spring Green.....	50-51
Dickeyville	21	Upcoming Events.....	55-58
Dubuque.....	22	Viroqua	52-54
Fennimore	23-24	Westby.....	54
Galena	25		



City Information/Numbers

Belmont	(608) 762-5142	Livingston	(608) 943-6800
Boscobel Chamber of Commerce	(608) 375-2672	Mineral Point Chamber of Commerce	(608) 987-3201
Cassville Information	(608) 725-5180 or (608) 725-5101	Montfort	(608) 943-6917
Cuba City Information	(608) 744-2152	Mt. Horeb	(608) 437-5914
Darlington Chamber/Main Street	(608) 776-3067	Muscoda	(608) 739-9158 or 1-800-663-8777
Dickeyville (Grotto)	(608) 568-7519	Platteville Chamber of Commerce	(608) 348-8888
Dodgeville Chamber of Commerce	(608) 935-5993	Potosi/Tennyson Chamber of Commerce	(608) 763-2208 or (608) 763-2121
Dubuque Convention and Visitors Bureau	(319) 557-9200	Prairie du Chien	(608) 326-2241
Fennimore Chamber of Commerce	(608) 822-3599	Richland Center	(608) 647-6205
Galena/Jo Daviess Convention and Visitors Bureau	1-800-747-9377	Spring Green Chamber of Commerce	(800) 588-2042 or (608) 588-2054
Grant County Information	(608) 748-4484	Viroqua Tourism	(608) 637-2575
Lancaster Chamber of Commerce	(608) 723-2820		

Exploring



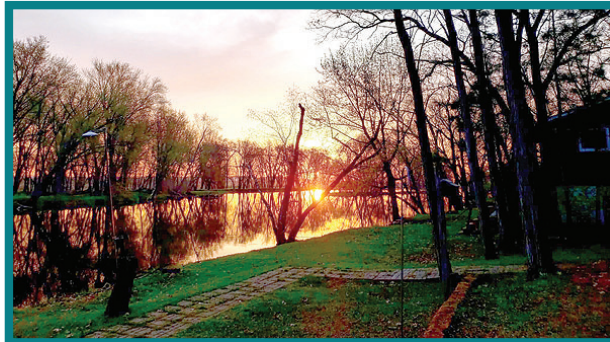
AVOCA

Avoca, a small, beautiful village nestled between lush hills and scenic Wisconsin river straddles the northwest border of Iowa County. Avoca's yearly celebrations include: Fireman's Annual Celebration in February, St. Patrick's Day Parade in March, Memorial Day Celebration in May, and Labor Day Celebration in September. Avoca has the biggest Prairie Land east of the Mississippi River, from which you are able to walk to the Wisconsin River and enjoy the natural beauty.



In 2008, Avoca dedicated its new Veteran's Memorial in Legion Park on Front Street, complete with a retired military tank. The Avoca Lakeside Park features a campground, ancient Indian mounds, ball diamond, concession stand, two picnic shelters, playgrounds, a swim at your own risk beach, and boat ramp.

The Avoca Campground has 75 sites, accommodating both permanent and vacationing campers. Indian mounds are in the park overlooking the Avoca Lake. The group includes six linear and four conical mounds. The Avoca Lake is backwater of the Wisconsin River and is great for fishing, no-wake boating, canoeing and kayaking. The lake is approximately 2 miles long and during most of the summer is shallow, with the deepest areas about 8-10 feet. The Avoca Prairie



is located about 2 miles east of the village and is one of four Department of Natural Resources public hunting area within 7 miles of the village. Game common to the area are the whitetail deer, wild turkey, waterfowl, pheasants, and other small game. The prairie is the largest contiguous prairie east of the Mississippi River. The bottomlands are covered with many different grasses, flowers, and other plants.

Come Explore Avoca!



Avoca MERCANTILE



We offer a large selection of unique and affordable treasures.

**SEASONAL FLOWERS
SIGNS & WREATHS
SEASONAL DECOR
& MUCH MORE!**



We've Moved!

Our store is now located on our farm, set in a beautiful Victorian farmhouse just waiting for you to explore!

(608) 475-1542 • 1768 Wisconsin Street • Avoca •



Exploring



BAGLEY

Bagley is a small community nestled in the valley between the Mississippi River and the rolling hills of Wyalusing State Park. Bagley is a sportsmen's paradise. Cabin rental, camping, fishing, boating, hunting and just plain relaxing are all a part of the village. River of Lakes Camp Ground, Jellystone Park and Wyalusing State Park are where you can find many of your camping and boating needs. Have a boat and want to put it on the river? There are multiple locations for you to launch your boat including Bohringer Landing and Jays Lakes landing to name a few.

Wyalusing State Park has 2,628 acres including hardwood forests, pines, bluffs, springs, waterfalls, wetland and backwaters. The park is home to deer, beaver, fox, and many other animals. A canoe trail through the river sloughs offers a unique way to see the waterfowl and diverse animal life. There are hiking trails that lead



THUNDER IN THE VALLEY PROFESSIONAL BULL RIDING

IS COMING TO

BAGLEY

SATURDAY, JULY 3

3 PEAT BULLRIDER OF AMERICA EVENT OF THE YEAR

Events held at Bagley Community Park

Mutton Busting **6:30PM**

Rodeo **7:00PM**

Halftime Show **TBA**

Fireworks **After Rodeo**

Barrel Racing & Bounty Bull

BULL RIDING ADVANCED WRISTBAND:

AVAILABLE UNTIL 1PM THE DAY OF THE SHOW

Adults: **\$15** • 4-10: **\$10** • 3 & Under: **FREE ADMISSION**

Advance wristbands at: Computer Support Plus (Prairie du Chien); Luck O' the Irish, Dew Drop Inn, Boulder Creek Campground & River of Lakes, Bagley; Lulu's Bar, Patch Grove; Bloomington Stop-N-Go

NEW: VIP Seating: \$100

Includes: Entry, grandstand seating and all beverages
Order on Bagley Fire Dept. Facebook Page

AT THE GATE: Adults: **\$20** • Kids 4-10: **\$15**



★ ★ ★ PROCEEDS TO BENEFIT BAGLEY VOLUNTEER FIRE DEPARTMENT ★ ★ ★



Area Winery

Spurgeon Vineyards & Winery

Open Year Round

Highland, Wisconsin
West of Highland on Q
follow the signs

Free Wine Tasting

Like us on **f** **Home of the Ruby Lady**

Please check our website often for details!
www.SpurgeonVineyards.com • 608-929-7692
16008 Pine Tree Road, Highland, WI 53543

2021 EVENTS

All Events are held only at Spurgeon Winery

May 8 & 9* • **The Great Wine & Chocolate Tasting**
(Pairing luscious chocolates with our Fine Wine)

June 12 & 13* • **Bring on the Bacon & Cheese Days**
(Pairing Prime bacon treats and Artisan Cheese with our Fine Wine)

July 17 & 18* • **Way Cool Wine Days**
(Making Mixers & Slushies with our Fine Wine and served with food)

August 14 & 15* • **Wurst-Wine Weekend EVER**
(Pairing Bratwurst and German Food with our Fine Wine)

Sept. 25 & 26 • **Harvest Festival**
(Live Music • Bring Your Own Lawn Chairs • Food Available • Wine Tasting)

October 30 & 31 • **Halloween Party**
(Pairing Halloween Candy with our Fine Wines, Ghoulish Recipes, and more!)

November 20 & 21 • **Christmas Open House**
(Super Sale on Select Wines • Free Wine Tasting • Free Product Tasting)

Exploring BAGLEY

throughout the park as well.

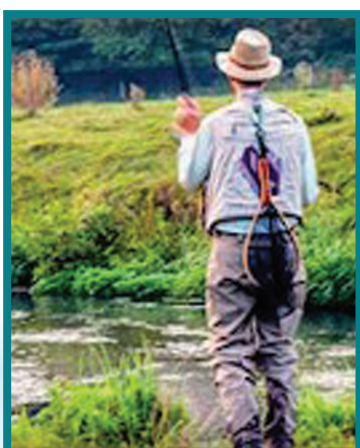
There is dining at its best with four well established restaurants offering nightly specials. Last minute groceries as well as bait can be found at the River of Lakes Camp Ground Store. The Lutheran Church offers Sunday worship.

Every one flocks to Bagley for the Independence Day Celebration each

year which includes a chicken barbeque, flea market, concession stand and beer tent ran by local organizations, Cow Chip Bingo, Bean Bag Tournament, raffle, fireworks and at dusk a street dance.

The big event of the Independence Day Celebration is the Thunder in the

Valley Professional Bull Riding which is a 3-peat Bullriders of America-Event of the Year. The event is always full of laughs, fun and adventure. It is not only the rodeo you get to watch, but Mutton Busting and Wild Cow Milking.




event venue

BLAKE HOLLOW BARN

EST. 2018

Upcoming Events

FRIDAY, JUNE 11
DUELING PIANOS SHOW
FROM 7-9 PM

Tickets can be purchased through [eventbrite.com](https://www.eventbrite.com)

Check out our Facebook for Ticket Availability & Upcoming Events!

Find out more at
WWW.BLAKEHOLLOWBARN.COM

Stop in and check us out for your next event!

11417 HICKORY RD, BAGLEY, WI 53801 • 608.778.1446

Exploring BELMONT

Belmont invites you to enjoy some of the areas finest local attractions. Belmont is located on Hwy. 151 between Platteville and Mineral Point.

FIRST CAPITOL HISTORIC SITE

First Capitol Historic Site is located 3.5 miles northwest of Belmont on County Highway G. In the 1800s this area, the lead mining region, was so prominent that Belmont was chosen as the meeting place for the First Territorial Legislature of Wisconsin Territory. First Capitol Historic Site features two restored buildings from the 1836 legislative session. Today, the buildings house displays relating to the formation of Wisconsin Territory, the 46 day legislative session, the site's transition to private use, its rescue from destruction, and its establishment as a state historic site.

BELMONT MOUND STATE PARK

Belmont Mound is a prominent topographical feature located three miles northwest of the Village of Belmont. Belmont, from the French 'Bell Monte', means "beautiful mountain". The Niagara Dolomite which caps this mound and the Platte Mound are the only remains of this formation that once covered the county.

Natural attractions of the park include rock formations such as "The Devils Dining Table", "Devils Chair", and "The Cave", all of which are located off the park drive on the north slope. This family park has nature, recreational and ski trails, woodland, wildlife, playground equipment, picnic area with grills and a shelter house as well as restrooms. There is an abandoned limestone quarry on the south side of the mound. Near the picnic area are remains of what probably were kilns used to heat limestone to form lime.

FOR ALL YOUR CATERING NEEDS McCARVILLE'S CATERING

101 W. Commerce St. • Belmont

608-762-6191

**NO PARTY TOO BIG OR SMALL
LET US TAKE THE WORK
OUT OF YOUR PARTY**

Saputo

Cheese USA Inc.

**336 S. Penn Street
BELMONT
608-723-5878**

Open:
**MONDAY
THROUGH
SUNDAY
AT 4:30AM**



Ma's Bakery
LOCAL, FRESH & HOMEMADE!
Breakfast - Lunch - Dinner

- ★ Fresh Baked Bread, Donuts, Pies, Treats and Coffee
- ★ Soup & Sandwiches, Subs and More



Featuring Delicious
Home Cooked Meals!

We Cater...

- ★ PRIVATE PARTIES
- ★ WEDDINGS
- ★ GRADUATIONS
- ★ BIRTHDAYS

Order bulk salad for your next picnic or get together.
5 varieties to choose from.

994-3171

450 Canal St.
Bloomington, WI

**SO
GOOD!**

Exploring BLOOMINGTON

Travelers on Highway 35 pass through the small town of Bloomington, Wisconsin, population 735. The bluffs and river valley create a scenic drive every season of the year. Bicyclists are challenged on the hills and snowmobilers enjoy the winter trails.

Settled in the early 1800s, this village was originally called "Blake's Prairie". A flour mill and mill house, erected by D. W. Taft, were completed in 1853. The old Taft's Mill, constructed of native limestone, still stands today and currently houses a pottery shop.

Agriculture remains the principal economic base, as evidenced by the types of businesses serving area residents, including a butcher shop, equipment dealer, vet clinic, livestock sale barn, hardware store, lumber yard and building center. Many small businesses provide basic services for the people in this quiet neighbor-helping-neighbor community.

Bloomington has three specialty events each year. First, the Blakes Prairie Junior Fair, held in July which highlights the projects of area 4-H and FFA youth, The Bloomington Sidewalk Sales held in August and Christmas in Bloomington Shopping Spree which runs the 1st Thursday in December where you will shop until you drop.

Exploring



BLUE RIVER

BLUE RIVER - SW UNIQUE SPOT

Don't let this little village discourage you. It is full of unique spots and a beautiful scenic area worth the drive. Blue River is a small village in Grant County. Located in the southwest corner of Wisconsin located off Highway 133 between Boscobel and Muscoda. The Wisconsin River is just minutes away to the north with beautiful farmland and hills to the south. You will see young and old riding their bikes or walking for enjoyment in this peaceful community.

Blue River has a wonderful park where you can watch a ballgame almost every night during the summer as children play on the new playground equipment just a few feet away.

SWEET SPOTS

It is the home of Eagle Cave, Wisconsin's largest onyx cave. Which has guided cave tours available during the summer. It is also home to a unique gift shop, Robin's Nest. And while you're visiting, enjoy a lunch at The Port with their wide variety of food choices.

AUTUMN FEST

The third weekend in August means Autumn Fest in Blue River, a three-day celebration that includes tractor pulls, fast pitch softball and the mouth watering Firemen's Chicken Barbecue on Sunday, after which visitors line the village streets for the Fest's parade finale.

The 1866 School Museum, a refurbished one-room schoolhouse, is open Autumn Fest Weekend and by appointment. Two churches serve the community, the Gospel Hall and the Blue River United Methodist Church which is over 100 years old and has wonderful stained glass windows to enjoy.

We invite you to visit and find out why we are the Heart of the Lower Wisconsin.



THE PORT

Blue River • Prairie du Chien

Check out The Port's Galley Restaurant
~ Food Worth The Cruise ~

- Citgo Fuels
- Deli
- SubExpress
- Squawkers Chicken
- Groceries
- Cedar Crest Ice Cream
- Bait
- Beer & Liquor
- Propane
- Sporting Goods
- Firewood
- Homemade Pizza

GRAB FOOD TO GO!



LIKE US ON FACEBOOK



14750 State Highway 60
Blue River, WI
608-537-2676

38773 Highway 18,
Prairie du Chien, WI
608-326-0555

Exploring



BOSCOBEL

Boscobel, offers a variety of community life experiences to residents and visitors. Historical and scenic area attractions, quality education programs, excellent economic development opportunities, and an active Chamber of Commerce blend together to create an outstanding little city in southwest Wisconsin.

Nestled along the lower Wisconsin River in northern Grant County, Boscobel has recreational activities for all ages. The swimming pool, ball diamonds, city parks, tennis courts, shelters, and boat landings are always busy. The Memorial Library offers residents an excellent collection of reading materials as well as public-access computers.

COMMUNITY

The area churches and religious organizations serve the spiritual needs of the community. Healthcare needs are served by the qualified staff and modern facilities of Gundersen Boscobel Area Hospital and Clinics. The many service organizations provide valuable support to the foundation of the community.



BOSCOBEL FARMERS MARKET

- ♦ Fresh Produce, ♦ Honey and Syrup
- ♦ Eggs and Meat
- ♦ Baked and ♦ Crafts and Artwork
- ♦ Canned Goods

♦ OPEN EVERY SATURDAY ♦

MAY 1 - OCTOBER 30
8 AM - NOON
THE DEPOT PARK

CONTACT US FOR MORE INFO
(608) 391-0635 OR BOSCOBELFARMERSMARKET@GMAIL.COM

A modern Industrial Park is home to businesses that employ a workforce known for high productivity, low absenteeism, and an excellent work ethic. Boscobel businesses enjoy the advantages of the Boscobel Municipal Airport and local freight train service.

RECREATION

The city has 10 public parks, including 30-acre Kronshage Park. The Olympic-size swimming pool, a basketball court, a volleyball court, five tennis courts, five shelters, and many picnic tables and outdoor grills are available for public use. There is a fee to reserve use of park shelters for private affairs such as family reunions.

Kronshage Park offers Olympic size swimming pool, wading pool, baseball/softball fields, tennis courts, basketball court, sand volleyball courts, playground equipment, horseshoe pits, 3 picnic shelters (Kronshage East, Kronshage West & Larsen), restrooms



(handicap accessible), numerous picnic tables and outdoor grills. Bluffview Park offers playground equipment and picnic table; Memorial

Park – playground equipment, picnic table, horseshoe pit; Northside (Fireman's) Park – playground equipment, picnic tables, picnic shelter,

BOSCOBEL DEPOT MUSEUM

Depot Park • 800 Wisconsin Ave. • Boscobel, WI 53805



COME
VISIT US!

OPEN SATURDAYS
9 A.M. - 1 P.M.

May thru October

DEPOT DAY
JUNE 19



FREE

Boscobel Chamber

Recreation • Farmers Market



Bowling • Lodging • Shopping

Disc Golf • Food • Swimming

Depot Museum • Movie Theatre

1006 Wisconsin Ave. • 608-375-2672

chamber@boscobelwisconsin.com • www.boscobelwisconsin.com

Shop LOCAL • Dine LOCAL • Sip LOCAL • Spend LOCAL

Exploring

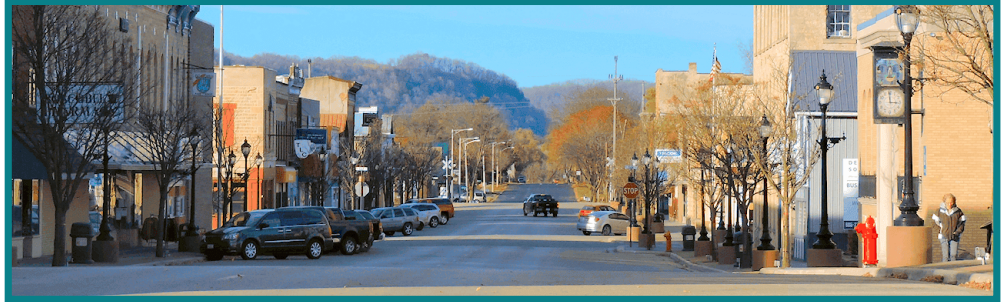
BOSCOBEL

outdoor grill, youth ball park/diamond; Scout Cabin Park – playground equipment, picnic tables, family ball diamond; Westside (Hinman) Park – playground equipment, picnic shelter, picnic tables, outdoor grill, restrooms (handicap accessible), family ball diamond.

One of the Wisconsin River's tributaries is the twisty and beautiful Kickapoo River with its sandstone cliffs, thought by some geologists to be the oldest river in the world! The confluence of the Kickapoo and Wisconsin Rivers is next to Wauzeka, in Crawford County.

For those that would rather stay on the road or stick to the land, most of Boscobel's streets and highways are UTV/ATV accessible, so bring yourself into town on your recreational vehicle of choice and enjoy a day in the city.

The scenic highways and bicycle trails of the Lower Wisconsin Riverway in the ruggedly beautiful Driftless Region



provide an excellent place for bicycling for families, groups of friends and organized tours.

State Highway 60 is designated by Wisconsin as one of only two Scenic Byways in the state. Wooded bluffs soar above the road while the wild Wisconsin River follows alongside. Numerous quiet country lanes wind past idyllic pastures and lazy trout streams. You'll see sheep and dairy cows grazing the hillsides and valleys, while bald eagles and red tail

hawks soar overhead. Wild turkeys and whitetail deer often can be seen along the margins of lush, forested hills.

Stop for a cold drink or a juicy burger at one of the many family-owned bar & grill establishments in the quaint villages that you'll find every six or seven miles along the route.

The Wisconsin River Trail Organization continues their construction of a paved trail for biking, walking and running with the final trail measuring 26 miles



celebrate



Make
Memories
AT MEMORIES
ON MAPLE



SPECIAL EVENT VENUE

608.485.2288

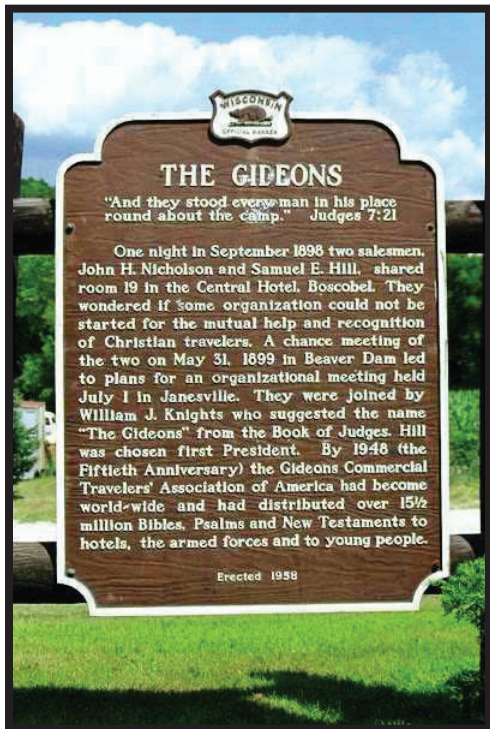
5948 MAPLE LANE
BOSCOBEL, WISCONSIN 53805



Exploring



BOSCOBEL



long.

You can also enjoy the paved 2-mile long Sanders Creek Trail, which winds right through the City of Boscobel.

For those who enjoy the water, a recreation area on the banks of the Wisconsin River offers picnic tables, fishing, and access to the river by an asphalt landing. The area also has restrooms, a telephone, and ample parking. Some of the best canoeing, kayaking, tubing, and fishing in the state are here on the lower Wisconsin River. The scenic bluffs, woodland, and sand beaches make for a memorable day on the river.

With its tree lined shores, sandy bottom, shallow depth and hundreds of sand bars to camp/fish/swim from, the Wisconsin River is a virtual paradise in the heart of the Midwest.

Our river town is home to lovely parks, trails for walking, biking, rollerblading, and fishing, a public swimming pool, free tennis courts, ball diamonds, and

disc golf courses. In addition, exercise enthusiasts can utilize a full-featured fitness center. We have a number of nightlife hotspots, including DJs and bands for dancing as well as a bowling alley and a variety of restaurants, cafes, bakeries and coffee shops.

With the Lower Wisconsin River, fishing (all year), canoeing, kayaking, bird watching, and floating the river are among the many activities. Also, road cyclists and motorcyclists both love to explore the varied, beautiful terrain. There are over 170 trout streams (nearly 90 are designated as high-quality Class I streams) in Grant County and neighboring counties of Richland and Crawford, making the area a world-class destination for trout fishing. The area is also well known for small game, deer, and turkey hunting. Simply driving the rural roads and viewing the beauty from various vantage points in the unique Driftless Area of Wisconsin, is an adventure to share with family and

Udder Brothers Creamery

Udderly Amazing!



24 Flavors

Hand-dipped Ice Cream

- Waffle Cones
- Regular Cones
- Ice Cream Dishes

DAILY SPECIALS

- Daily Lunch Specials
- Local Meats & Cheeses
- Cheese Curds
- Flavored Butter
- Jams & Much More

7 DAYS A WEEK 11-6 PM • 608-391-3120 •

1518 ELM ST., BOSCOBEL • ACROSS FROM BOSCOBEL LUMBER

WWW.UDDERBROTHERSCREAMERY.COM

FREE WIFI
For Customers!



Timber Lane Coffee

Sit... Sip... Savor...

DAILY LUNCH SPECIALS

Coffee • Paninis • Soups • Salads
Desserts • Specialty Drinks





In a hurry? Call ahead!
(608) 375-9123

MONDAY - SATURDAY 8AM - 5PM

934 Wisconsin Ave, Boscobel

friends.

Drive, cruise, ride bike, fly or boat to beautiful Boscobel and neighboring towns, and discover the rich and enjoyable experiences awaiting you in Wisconsin's Outdoor Recreation Destination!

ATTRACTIONS / MUSEUMS

The Boscobel Hotel was built in 1863 and originally known as the Central House, this three-story native limestone landmark is now listed on the State and National Register of Historic Places. The hotel etched its mark in world history in 1898 when two Christian traveling salesmen shared a room and conceived the idea of a Christian travelers' association. That meeting led to the formation of the world-famous Gideon Society, which has since placed millions of Gideon Bibles in lodging facilities throughout the world.

The Old Rock School is an excellent example of turn-of-the century Romanesque revival. The building was saved from demolition through a concerted effort to preserve the city's rich architectural heritage and is listed on the National Register of Historic Places. Today it is home to grades K-1 and complements a rich variety of educational opportunities for area youngsters.

Since the construction of the "old depot" in 1857, the Boscobel Depot was the "heartbeat

of the area." It served as the marshaling point of over 2,000 young enlisted men of the Union Army, and again in subsequent years of WWI and WWII. It also served the area with food and industrial goods, as well as travel-through station. Included among notable people entering the city were the two traveling salesmen, Samuel E. Hill and John H. Nicholson, who began the writings of the Gideon Bible, as well as John Blaine who left the city for a 3-term governorship of Wisconsin and later adversary for President Franklin D. Roosevelt.

The Boscobel Depot has recently been restored and will again serve the community as a very functional building with the conversion of its interior into



a "Turn-of-the Century Railroad" and "Early Rural America walk-through museum."

A meeting hall for veterans of the Grand Army of the Republic was established after the war and it still stands today. It is considered by experts to be the only remaining G.A.R. Hall



BEER, WINE CHEESE & LIQUOR

**USE OUR CONVENIENT
DRIVE-THRU WINDOW!**

WISCONSIN MEAT & CHEESE

- OPEN DAILY 9 A.M. - 9 P.M.
- SUNDAY 10 A.M. - 6 P.M.

U.S. HWY. 61 • BOSCOBEL • (608) 375-5105

We're Here
For You!



CLARE BANK

YOUR WISCONSIN BANK

**With 8 convenient locations
in Southwest Wisconsin
"We Can Do That"**

BOSCOBEL 608.375.4182	FENNIMORE 608.822.3521
MUSCODA 608.739.3148	MONFORT 608.943.6304
KIELER 608.568.3106	PLATTEVILLE 608.348.2727
BLOOMINGTON 608.994.2741	SHULLSBURG 608.965.4401

Life's Simple Pleasures

Reiki

Alternative & Holistic Health Service
Crystal Reiki * Reiki

KELLEY SEIM-JONES | Reiki MasterTeacher

Call Today To Set Up Your Appointment!

* (608) 306-0671 *

406 Elm Street * Boscobel



Willow & Ivy

DESIGN

Floral Design
Event Services
Gift Studio

(608) 375-0875

Monday - Friday • 9 am - 4:30 pm

100 W Le Grand Street • Boscobel, WI

Exploring



BOSCOBEL



FARMERS MARKET

Boscobel is starting its second year with the Farmer's Market in the Depot Park from 8 a.m.-Noon every Saturday from May until the end of October. The market has lots to offer as far as meat, produce and homemade baked goods and craft items. The Boscobel Depot will be open for tours from 8 a.m.-2 p.m. also.

SMOKE IN THE VALLEY

Like tractors? Like loud tractors? Like loud, modified tractors? Come check out

Boscobel Antique Club's annual tractor pull, Smoke In The Valley. First Saturday in June. The pull will be held at the Boscobel antique club grounds, just off Hwy. 133 on Chestnut Street. Antique tractor pull starts between 8 and 10 a.m.; American Pullers at 11 a.m.; NTPA pull at 7 p.m.

WELCOME HOME TAILGATE PARTY CHICKEN Q

The Wisconsin River Trail Organization holds an annual Chicken Q July 3 every year at the Kronshage Park in Boscobel.

4TH OF JULY CELEBRATION

Come celebrate the 4th of July in Boscobel put on by its very own



in Wisconsin, possibly in the Midwest. The Hall received State & National Registers of Historic Places designation on December 27, 2007.

The GAR Civil War Museum is filled with mementos of the Civil War era. Pictures, old drums, flags, and even volumes of history from local veterans can be seen at the hall.



AUTO PARTS

For all your needs
while you're on the road...
We've got you covered!

- ✓ MARINE BATTERIES
- ✓ ATV -UTV BATTERIES
- ✓ CHAINS & CABLES

- ✓ HARDWARE
- ✓ TRAILER PARTS
- ✓ HYDRAULIC HOSE MADE

We've Got It All Right Here!

Open 7 days a week! • Sundays 8 - Noon

SERVING YOU IN 2 LOCATIONS

Boscobel

1507 Elm St, Boscobel, WI

(608) 375-3328

GIFT CERTIFICATES

Richland Center

890 US Hwy 14 E,

Richland Center, WI

(608) 647-8853



WE ARE PROUD
TO BE A **2021**
AMERICAN STAR
CERTIFIED AGENCY

Excellence in Customer Experience





AMERICAN STAR
CERTIFIED AGENCY



AMERICAN FAMILY
INSURANCE

Leah Granzow Agency, LLC

Boscobel & Highland • (608) 375-5776

American Family Mutual Insurance Company, S.I. & its Operating Companies, 6000 American Parkway, Madison, WI 53783 CA-002519 1/21

Exploring

BOSCOBEL

volunteer fire department. You will not be disappointed and it is a day of family fun. Every year Boscobel starts the morning off with the Firecracker Fun Run/Walk. Boscobel then struts its stuff with a parade of various floats and then up to the Kronshage Park for the variety of camaraderie and fun for the whole family. At dusk, the town takes a seat with young and old alike to watch Southwest Wisconsin's largest fireworks display. It is well worth the wait.

In addition to the attractions and outdoor activities in the City of Boscobel, there is much to do and explore nearby. With the Lower Wisconsin River, fishing (all year), canoeing, kayaking, bird watching, and floating the river is just a good start.

There are over 170 trout streams (nearly 90 are designated as high quality Class I streams) in Grant County and neighboring counties of Richland and

Crawford, making the area a destination for trout fishing. The area is also well known for small game, deer, and turkey hunting. Simply driving the rural roads and viewing the beauty from various vantage points in the unique Driftless Area of Wisconsin, is an adventure to share with family and friends.

Few places can rival the Boscobel area for the sheer volume of publicly accessible land, Driftless Region scenic beauty, and wide range of opportunities for outdoor fun and adventure. For these reasons, our area truly is Wisconsin's Outdoor Recreation Destination.

We welcome you to the city of Boscobel, Wisconsin! We hope you enjoy our wonderful community.

Come, relax, enjoy your stay a little longer!

Here in the southwest Wisconsin, you'll find the charm of years gone by and the conveniences of today.



*Traveling
Through?
We Can Help!*

TERRY'S TIRES & TOWING

**MAKE SURE YOUR TIRES ARE ROAD READY
BEFORE YOUR NEXT GREAT ADVENTURE**



- Tires
- Brakes
- Oil Change
- Alignment
- And More!

(608) 375-4607

311 E Prairie Street • Boscobel, WI

Traveling Through...

We're Here For You



We Make Banking Easier

A bank for the people.
If you're looking
for a place where you are
more than just a number,
but still have access to
convenient technology,

PEOPLES STATE BANK IS IT!

PRAIRIE DU CHIEN (DOWNTOWN & RIVERSIDE SQUARE) • BAGLEY
BLOOMINGTON • BOSCOBEL • DICKEYVILLE • EASTMAN • FENNIMORE
GLEN HAVEN • GUTTENBERG • HARPERS FERRY • LANCASTER
MOUNT HOPE • PATCH GROVE • POTOSI • SENECA • SOLDIERS GROVE
VIROQUA (DOWNTOWN & VERNON SQUARE) • WAUZEKA

www.peoplesfinancial.com



Castle Rock Ridge

BUFFET SPECIAL

MAKE YOUR RESERVATION!

ADULTS \$14⁹⁹

KIDS 5-10 \$6⁹⁹

UNDER 4 FREE

CARRY-OUT AVAILABLE

For more info or for reservations call:

608-943-8525 or 608-391-2425



RECEPTION HALL

BOOK WITH US!

RECEPTIONS

CEREMONIES

BRIDAL SHOWERS

BABY SHOWERS

BANQUETS

AFFORDABLE

NEW BUILDING

CATERING



15040 SHEMAK RD, MUSCODA, WI • CHECK US ON FACEBOOK



801 E. PRAIRIE ST. - 5480 E. HWY 133

Join Our TEAM

**Nu-Pak offers a wide range of
packaging, converting, manufacturing,
and warehousing services.**

Nu-Pak is seeking motivated employees to help fill our new production line. New pay rates up to \$17.00/hr.*, as well as a \$1000 retention bonus paid within the first 90 days. Nu-Pak offers steady work in a clean and fun work environment. Part time options available, please inquire within.

* Pay includes perfect attendance bonus of \$80/week.



801 E. PRAIRIE STREET, BOSCOBEL, WI 53805 • PHONE: 608-203-6409

Cassville stands on the east bank of the Mississippi surrounded with very pretty scenery; the eye can rest upon the soft and soothing, the grand, the sublime; it will find there everything necessary for the promotion of man's comfort and the exercise of his energies; in a word, nature has done all in her power to make it one of the most delightful spots in the far west." These were the words spoken by Colonel S. Hamilton when nominating Cassville for the Capital of the new Wisconsin Territory back in 1836.

The town is built on history, the first recorded mention of the present site of Cassville was made by Henry Schoolcraft in 1820. But it wasn't until 1827 that signs of a real settlement appeared when John York Sawyer built a smelting furnace and the first real house was built.

Wisconsin was initially governed by the Northwest Ordinance of 1787 and subsequently as part of the Indiana, Illinois and Michigan Territories. Cassville took its name by from Lewis B. Cass, at one time governor of the Michigan Territory. In 1836, after surrounding territories broke away to become states, it became the new Wisconsin Territory and included all of the present day Iowa, Minnesota and eastern Dakotas.

MAGIC OF THE MISSISSIPPI

Travel here by scenic country roads, bike, car ferry, boat or airplane. River recreation beckons all. Fishermen find their year-round catch whether on the Mississippi or picturesque backwaters. Riverside Park, located along the banks of the Big River, offers shelters, picnic and play areas, and a picture-perfect view of passing tugboats, pleasure boats, and perhaps an old fashioned paddle wheeler.

Boaters can find launching and docking facilities near the park to enjoy a day on the majestic Mississippi. Riverside Park is in walking



distance of downtown Cassville with its shops and eateries. Enjoy America's rural small town hospitality.

NELSON DEWEY STATE PARK

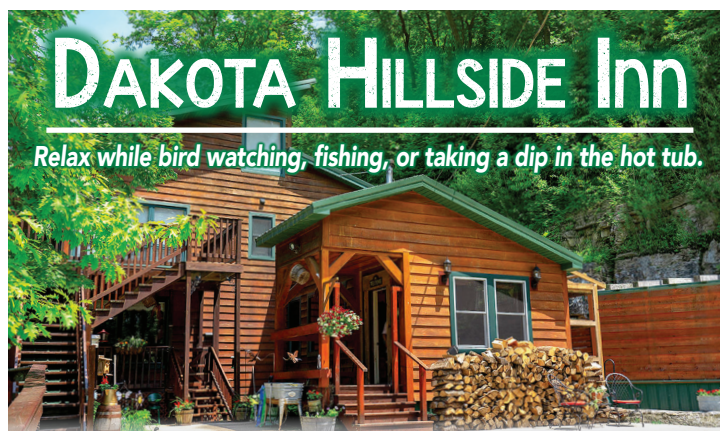
Witness a breathtaking scene at the summit of the park drive at the Nelson Dewey State Park and imagine what Nelson Dewey envisioned for his elaborate 2000-acre estate. The Mississippi River stretches lazily below with the Iowa bluffs in the distance. Hopewell

Indian Mounds along the winding road reminds us of the rich heritage of a bygone era. A delight for hikers and campers alike, the park offers wooded campsites, showers, and picnic areas with shelters and grills. The scenic bluffs and trails offer incredible hiking, bird watching and fantastic photo opportuni-

ties.

LOOP THE LOOP

Take a ride on the Cassville Car Ferry and visualize a twenty-three year old Nelson Dewey and his first trip across the Mississippi to reach the little village that was envisioned to become the first capital of the Wisconsin territory. The ferry served the early settlement as far back as 1836 and was powered by horses working on a tread-mill, and though horses have been replaced, it continues today making that same trip back and forth across the mighty Mississippi. "Looping the Loop" was fashionable in the 20's when cars were a novelty. People of the area would cross the river via the ferry, then travel to Dubuque, IA., then cross back to the Wisconsin side for their return home. Today, it is still a fun way to cross the Mississippi.



Relax while bird watching, fishing, or taking a dip in the hot tub.

Dakota Hillside Inn is located between beautiful Potosi, and Cassville, WI.

Dakota Hillside is one of the unique lodges in Southwest Wisconsin that is only 400 yards away from the Mississippi river.

Each suite has it's own private entrance, individual bathroom, dining area and air conditioning.

Built from reclaimed lumber, Barb and Ronald welcome you into their home for a memorable Southwest Wisconsin get away. **Call today to book your weekend, or vacation getaway!**

608-725-2099 or 608-726-0730

4998 COUNTY RD N, CASSVILLE, WI

www.dakotahillsideinn.com



Kayaking is also available on site for an added charge.

OKEY'S

Super Market
Cassville, WI

Check Us Out On Facebook & Twitter

- Great Selection
- Low Prices
- Lottery, Beer, Wine
- Fresh Meats and Produce
- and Liquor



Picnic & Catering Needs

(608) 725-5178 Fax (608) 725-5153

Store Hours: Mon.-Sat. 6 a.m. to 8 p.m. Sun. 6 a.m. to 6 p.m.

EXPLORE CASSVILLE, WISCONSIN



TRAVEL THE GREAT RIVER ROAD & SPEND A DAY IN CASSVILLE

Enjoy the Great Mississippi River & Great Beaches

Fishing | Boating | Skiing | Canoeing | Kayaking | Hiking

Ride the Car Ferry – Play & Walk in our Beautiful Riverside Park.

SWIMMING POOL W/SLIDE

Come take a swim in the Penny & Myra Eckstein zero entry pool

GREAT CAMPING

Nelson Dewey State Park, Whitetail Bluff Campground & Resort, Sandy Bottoms-Up & Schleicher's Landing

LODGING

Eagles Roost Resort on the river, Mississippi Sand Bar Motel, Upper Mississippi Lodging & check out the area Airbnb's

SHOP OUR DOWNTOWN

Great River Hardware Hank & Great River Sportsman, Cassville BP, Amelia's Attic, Janet's Flowers, Okey's Market & Liquor Store

RESTAURANTS/BARS

Enjoy Great Food & Friendly Atmosphere

Moon's Town Pump, J&J's Sandbar, Anker Inn Smokehouse, Son Chasers Social Club, Solid Ground Cassville Café & Silver Spigot

FERRY HOURS: 10AM - 8PM

First Friday in May - Memorial Day: **Friday, Saturday & Sunday ONLY**

Memorial Day - Labor Day: **Seven Days a Week**

Labor Day - Last Sunday in October: **Friday, Saturday & Sunday ONLY**

Last Day of Operation: **Last Sunday in October**

2021 CASSVILLE EVENTS

FRIDAY
JUNE 4
SATURDAY
JUNE 5

Cassville City Wide Garage Sales

SATURDAY
JUNE 5
SUNDAY
JUNE 6

Free Fishing Weekend in Wisconsin Waters

FRIDAY
JUNE 11

Night in the Park

SATURDAY
JUNE 19

Cassville Fire Dept.'s Chicken BBQ

SATURDAY
JUNE 25

Cassville Rescue Squad Supper & Dance

FRIDAY
JULY 9

Night in the Park

SATURDAY
JULY 17

Lions Day in the Park Tractor Pull/UTV Ride

SATURDAY
AUG. 7

American Legion Tonnage Tournament

FRIDAY
AUG. 13

Night in the Park Potosi Band

SATURDAY
SEPT. 4

Cassville Car Cruise

SATURDAY
SEPT. 11

Cassville Park Preservation Party

SUNDAY
SEPT. 19

St. Charles Fall Festival

SUNDAY
NOV. 27

Christmas in Cassville



Visit us online at www.cassville.org | 24 Hour Info at 608.725.5180 | PO BOX 171 | Cassville, WI

STONEFIELD VILLAGE

Explore Wisconsin's roots at Stonefield Historic Site! Journey by way of the Great River Road to become part of Wisconsin's rural life and agricultural history through a 1901 farmstead and village, the State Agricultural Museum, and home site of Wisconsin's first governor, Nelson Dewey. Stroll through the streets of the Stonefield village and tour the shops, school, and church. Make sure to stop in the confectionary for a sweet ice cream treat. See how Wisconsin became the dairy state instead of the wheat state in the State Agricultural Museum, home to the oldest tractor in North America. Head to higher ground to discover the unique Gothic revival style home site of Governor Nelson Dewey, and the impact



he had on the formation of Wisconsin. Enjoy the bluff views of the Mississippi from the same vantage point the Dewey family once did.

Don't miss our special event days full of hands-on activities, speakers, food, tours, and more! Celebrate June Dairy Month with Agriculture Appreciation

Day. Learn not only about dairy, but also the diverse agricultural landscape of Wisconsin today, from speakers, cooking on the woodstove, making butter, wagon rides, and an implement show among other activities. Get a feel of an historic fall with the Great River Road Festival in September. Hang out by the Mississippi to help to make sorghum, try your hand at broom making, take in the fall atmosphere on a wagon ride, and watch a tractor pull. Finally, prepared to be spooked in our transformed vil-

lage during Safe & Spooky Halloween. Wear your scariest costume and trick-or-treat around the "haunted" village!

Stonefield Historic Site is owned and operated by the Wisconsin Historical Society. It is open Thursday – Sunday, June 1 through September 30. www.stonefield.wisconsinhistory.org

Forget it all.

We've got it at Great River Sportsman.

Show us this ad and get a **FREE** telescoping camping fork with purchase.

Limit one fork per person while supplies last. Offer good through Labor Day 2021.



113 East Amelia Street, Cassville, WI | (608) 725-2199

Exploring



DARLINGTON

Darlington, the Pearl of the Pecatonica, is a community that offers the small town friendliness of days gone by, the tranquil pace of rural America and something for just about everyone with a mix of unique shops, premier ATV trails and other recreational opportunities.

The site of Darlington was first claimed in 1836 by Jameson Hamilton. In the spring of 1850, J.M. Keep and J.B. Lynde, the latter an agent of Joshua Darling of New York, purchased the land. The money used for the purchase was furnished by Mr. Darling, the reason his name was used in the selection of a title for the village.

The original plat of the village was registered on July 25, 1850. It contained 35 blocks of eight lots each. The streets of the original plat were named for the wives of the originators and remain today. They are Louisa, Catherine, Ann, Mary, Cornelia, Lucy and Minerva.

Darlington became a village in 1865



and was incorporated as a city in 1877.

The city of Darlington has many beautiful historic buildings, including but not limited to, its Main Street. Darlington's Nationally Registered Historic Downtown is now the focal point for Darlington's Main Street Program. The distinction unites Darlington with other communities across the state. They share the common goal of revitalizing their downtowns by reinvesting in their historic buildings and local businesses. Darlington offers local residents and tourists a diversity of restaurants, retail businesses and service businesses with quality personal service.

The funding for the Lafayette County Courthouse located in Darlington, was provided by a single person. Matthew Murphy, an attorney from New Diggings, donated the proceeds from a civil War widows and disabled victims fund that were never used along with a percentage of his own personal estate. Shortly after Murphy's death in 1905, the courthouse was erected at a cost of \$136,500.

Visitors to Darlington should take an hour or so to see the beautiful rotunda and then stroll over to the Carnegie Free Library which now houses the Lafayette County Historical Society.

In 1904, Andrew Carnegie gave a grant of \$10,000 to the city of Darlington to build a library on a picturesque spot in the city park. Next door you'll find the Johnson Public Library, built in 2000, with funds donated by Ervin W. Johnson and additional money raised by the community. Johnson, a Darlington attorney, gave over \$1 million to the project. Also in the city park, you'll see Civil War Monument erected in 1889 to honor all Lafayette County men who served in the Civil War.

Whether you want to relax and watch the world go by at a campsite on the Pecatonica River, research your family tree, shop the distinctive shops on our historic Main Street, get some great Wisconsin cheese, fish or soak in some rays at nearby Yellowstone Lake or cruise along the ATV recreational trail in any of three directions, you can do it all in Darlington, a short distance from nearby Galena, Ill., Dubuque, Iowa, and other southwest Wisconsin tourist destinations.

Canoers enjoy the quiet, relaxing and enjoyable surroundings that the scenery of the Pecatonica River has to offer as you drift on through this body of water. Darlington offers canoeists three convenient locations for putting in and taking out. Landings are also located in and near Blanchardville, Argyle, Black Hawk Memorial Park in Woodford, South Wayne and Gratiot. The Pecatonica River's east and west

Pecatonica River TRAILS PARK CAMPGROUND

Camping along the Pecatonica River
and the Cheese Country ATV Trail.

32 CAMPSITES

30 Electrical Sites \$25/Night

2 Non-Electrical Sites \$15/Night

NO RESERVATIONS
First Come, First Served

CAMPGROUNDS INCLUDE

Fire Ring, Picnic Table, Restrooms/Showers, RV
Dump Station, Playground Equipment, Canoe
Launch and Handicapped Fishing Pier



608.776.4970

www.darlingtonwi.org

Darlington, WI



Located on Hwy. 11 & Cty. K, Gratiot, WI • 608.214.9253

25 SITES WITH WATER & ELECTRICITY \$20

10 SITES WITHOUT ELECTRICITY \$15

CAMPGROUNDS INCLUDE

- Fire Pits with Grills
- Campfires Permitted
- Picnic Tables & Trash Containers Throughout
- Playground Area
- Leashed Pets Allowed
- Pumping Station Short Distance Away
- First Come, First Serve
- No Reservations
- New Bathrooms w/Showers

NEARBY ATTRACTIONS

- Access to Cheese Country Rec. Trail
- Most Businesses within Walking Distance
- Kid Friendly Gratiot Park with New Playground Equipment with Restroom Area
- 2 Boat Landings to the Pecatonica River for Canoeing or Fishing
- Wolf Creek Trout Stream
- Handicap Fishing Area on the Pecatonica

Exploring



DARLINGTON

branches provide tranquil floats through woods, prairie, dairy farms, bluffs and rock outcroppings.

Nothing goes better with canoeing than camping and fishing, and Darlington's Pecatonica River Trails Park is a great place for both. Yellowstone Lake State Park near Blanchardville offers over 150 camping units with picnic sites, hiking, fishing, hunting and an array of water sports opportunities.

Darlington is the heart of the Cheese Country Recreation Trail. The 47 miles of trail link Darlington with the communities of Monroe, South Wayne, Gratiot, Calamine and Mineral Point. The trail is open to bikes, horses, ATVs, snowmobiles, walkers and cross-country skiers. Park in one of Darlington's convenient lots adjacent to the trail and then follow the abandoned rail corridor as it meanders through oak and maple woodlots, sloughs, dairy

farms and colorful rides. You can enjoy the trail throughout the year. Multi-colored, gorgeous stands of native prairie wildflowers bloom along the trail through October. Because the railroad protected its property from the plow, these plants are the same ones that

inhabited southwest Wisconsin when the first settlers arrived.

The Pecatonica River State Recreation Trail connects Belmont to the Cheese Country Trail at Calamine. This trail is open to bikers, hikers and snowmobilers only.



New Horizons
SUPPLY COOPERATIVE



• PIZZA • SANDWICHES • LUNCH SPECIALS • POP • BEER
• ICE • ICE CREAM (ASHBY'S) • FRIDAY FISH FRY

11670 STATE ROAD 23, DARLINGTON

OFFICE: 608-776-4437 • STORE: 608-776-8005

Exploring



DICKEYVILLE

The Village of Dickeyville began in 1842 when Charles Dickey, a surveyor from Pennsylvania, opened a general store in what is the center of the village today. The 30-year-old Dickey established a dry goods store which also sold groceries, boots, shoes, clothing and farm machinery. That first building sat on farm land, where Muller's Restaurant used to be.

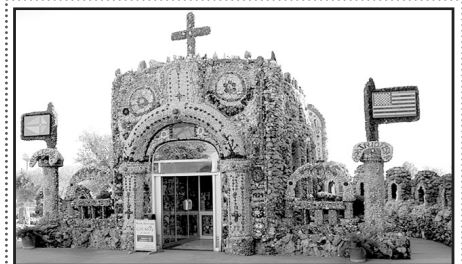
Dickey owned that store for 19 years and during that time he surveyed Grant County. The village was named for him. The small community was called "Dickeysville" in 1849 and the "s" remained in the town's name until 1932 when it was shortened to fit on maps. Dickey got "western fever" in 1861 and moved to Kansas. He never returned to the village before he died in 1902.

Dickeyville is a small, friendly town, located in the rolling hills in the heart of America's dairy land approximately ten miles from Dubuque, IA and Platteville, WI where a lot of the villagers commute to work. There are two community parks which feature; softball fields, horseshoe pitch, tennis courts, playground equipment and covered pavilions. Softball and Horseshoe leagues are available in the Summer and Fall. Need some ice, pop or snacks? Stop in at the local grocery store, meat store or local gas stations. Eating is never out of reach with three different eating establishments.

GROTTO

Today, Dickeyville is the home of the famous Dickeyville Grotto and shrines, built by Father Matthias Werneus, a Catholic priest, pastor of the parish from 1918 to 1931. There are several shrines in the grotto garden. In addition to the main shrine which houses the grotto of the Blessed Virgin, there is a patriotic shrine, the sacramental shrine of the Holy Eucharist, the Sacred Heart Shrine, Christ and Kind Shrine and the Stations of the Cross.

The Grotto is of interest to rock collectors, art admirers, and anyone wishing to renew their faith.



Don't Miss...

THE GROTTO

- Religious & Patriotic Shrines & Gardens always open
- Large Gift Shop
Open Daily at 9AM
April 1 - November 1
- Bus Tours Welcome
- Handicapped Accessible

The Grotto

Hwys. 151, 35 & 61

P.O. Box 506

Dickeyville, WI 53808

(608) 568-3119

www.dickeyvillegrotto.com



DUBUQUE

The city of Dubuque was named after Julien Dubuque, a French-Canadian fur trader who received permission in 1788 from the Fox Indians to work the lead mines around the present day city.

Julien was the first permanent white settler in Iowa and was greatly respected by the Indians. When he died in 1810, he was buried with honors befitting a chief. A large limestone monument overlooking the Mississippi displays his grave just off Grandview and Julien Dubuque Drive.

However, after Dubuque's death in 1810, other settlers met with trouble in their attempts to mine lead where the present-day city lies. It wasn't until 1833 under the terms of the Black Hawk treaty, that settlement was allowed.

Dubuque grew rapidly into a thriving river city, and a survey was made by the U.S. government for a town site. The site was laid on the river plain, and today,

the city covers an area of more than 25 square miles.

If shopping is on your list of things to do, make sure you shop Dubuque. Cable Car Square is located at the base on the Fenelon Place Elevator and features charming shops. Antiques, clothing, collectibles, imports, gourmet food, art, jewelry, gifts and candy can be found throughout the year. Also located in Dubuque is the Kennedy Mall Shopping Center. Kennedy Mall features JC Penney, Sears, Younkers, Eddie Bauer, Christopher & Banks, Victoria's Secret and many more. While shopping enjoy a bite to eat at Bishop's or any of the snack bars located in the mall.

Don't miss Asbury located on the west end of Dubuque which has a Kohl's, Michael's, Famous Footwear, Dress Barn, and much more. We invite you to enjoy shopping Dubuque. You'll be surprised at what you find!

Recreation for everyone in your

traveling party can be found in Dubuque. Heritage Trail located off Hwy. 52 are a 26-mile recreational trail. Woodland, river overlooks, railroad artifacts and general scenic sites can be found throughout the trail. Bike, run, job, ski or snowmobile on the trail. Canoeing is popular in the area as there are many rivers and lakes in the immediate vicinity. Enjoy golf a Lacoma Golf Club, Derby Grange, Bunker Hill or The Meadows. These courses are well kept and include a wide variety of challenges for the novice or experienced golfers.

NATIONAL MISSISSIPPI RIVER MUSEUM

Open year round this museum promotes the life and history of the mighty Mississippi River in the area. Explore the history of the river with displays, movies and artifacts on display. The museum hosts several historical collections that hold visitors young and old in awe.

Anna Siebels,
Talent & Recruitment
Manager
563-585-0560 x207
asiebels@hillsdales.org
Hills & Dales
1011 Davis St
Dubuque, IA 52001

Apply Today!
www.hillsdales.org

CAREER OPPORTUNITIES:

Personal Assistants (DSP) ICF/HCBS

- PA Aide, PA, & PA III

Autism/Applied Behavior Analysis Therapy

- Behavior Technician
- BCBA Board Certified Behavior Analyst

Health Services Department

- RN Registered Nurse
- LPN Licensed Practical Nurse
- CMA Certified Medication Aid

EMPLOYEE BENEFITS:

- Medical & Dental Insurance
- Vacation & Sick Time
- 401(k) & Profit Sharing
- Flexible Spending Account (FSA)
- Life & Short-term Disability Insurance
- Resourceful Training
- Birthday Holiday and more. . .

*Benefits subject to eligibility based on employment status and position.

Support Services

- Food Service
- Housekeeping (ESA)
- Maintenance
- Administrative

Childcare/Preschool Services

- Childcare Assistant
- Lead Teacher

PROGRAMS

Intermediate Care Facility (ICF)
Home & Community Based Services (HCBS)
Autism/Therapy Services (ABA)
Childcare & Preschool Center

Hills & Dales is dedicated to building meaningful lives for individuals with disabilities by offering services that support the whole person and enhance community inclusion.

2020 Dubuque Area Chamber of Commerce

CELEST
PLACE TO WORK



hillsdalesHR



**CHECK OUT OUR WEBSITE
FOR CURRENT OPENINGS
AND APPLY TODAY!**

www.hillsdales.org

EOE

Exploring



FENNIMORE

Natural beauty, history, fun and relaxation await you in Fennimore. Located in Southwest Wisconsin at the crossroads of Hwy. 61 and 18. Fennimore offers a variety of restaurants including fast food, cafés and bar and grills.

You'll find specialty food and other shops and service businesses, along

showcases collectible dolls and toys from around the world. The museum incorporates heirloom dolls and toys which are both owned and on loan to the museum. The Fennimore Doll and Toy Museum is located at 1135 6th Street (next to Subway) and just a short walk from the Fennimore Historical Railroad Society Museum. Please call



with diverse lodging options. Visitors are always welcome to worship at our area churches and St Mary's Chapel of Perpetual Adoration where community volunteers have been in prayer 24 hours a day for nearly two decades.

FENNIMORE DOLL AND TOY MUSEUM

The Fennimore Doll and Toy Museum

ahead for current hours or to make special tour arrangements. Call 1-608-822-7920 or (608) 822-4100.

THE FENNIMORE HISTORICAL RAILROAD SOCIETY MUSEUM

The Railroad Museum located at 610 Lincoln Avenue. The building has been remodeled inside and out to resemble a turn-of-the-century depot. Ticket booth



replete with telegraph paraphernalia, ticket window and potbellied stove, Telegraph switchboard, pictures tracing the history of the narrow gauge railroad. Miniature 15" gauge 4-4-0 steam locomotive where you can watch moving parts 2 sets of G model trains with replica buildings featuring Fennimore in the early 1900's.

An operational 15" gauge rail with 700 feet of track sits south of the railroad museum. Scale buildings complete the miniature layout. Rides are available

OVER 50 FLAVORS of BRATS!

- Snack Sticks
- Sausages
- Flavored brats & hamburger patties
- Steaks
- Jerky
- Varieties of beef, pork and chicken cuts
- Seasonings & sauces

Fresh Cheese Curds Available!

The BUTCHER Shop

4391 HWY 18, FENNIMORE, WI • 608.822.6712

Friederick's
FAMILY RESTAURANT

SUMMER HOURS: MON-FRI 5:30AM-9PM SAT & SUN 5:30AM-8PM

- Daily Specials
- Friday Night Fish Fry
- Fresh Baked Pies
- Credit Cards Accepted
- Breakfast Served All Day
- Carry Outs Available

VIEW OUR MENU AT FRIEDERICKSRESTAURANT.COM

430 Lincoln Ave., Fennimore • 822-7070

Exploring



FENNIMORE



(\$1.00 for a train ride) on the 15" miniature train system on weekends and scheduled holidays. (Please call before traveling a long distance.) It is

best to Call in advance for current hours or to make special tour arrangements. call 608-822-6858 or (608) 822-3446.

NAPPS MOTEL

645 12TH ST. HWY 18 EAST, FENNIMORE, WI 53809 | 608.822.3226



Our guests enjoy a wide variety of outdoor activities such as:

Golf, Hunting, Fishing & Several Other Local Attractions That Include 3 State Parks, Wineries & Much More

We offer a variety of rooms at very reasonable rates, banquet and meeting facilities in a quiet, friendly atmosphere.

WWW.NAPPSMOTEL.INFO • NAPPSMOTEL@GMAIL.COM

ACTIVITIES

- Public Nine hole - Hickory Grove Golf Course.
- Oakwood Nature Park with Disc Golf Course.
- Baseball Complex
- 100 miles of world class trout streams within a 10 mile radius of Fennimore

• Wide variety of hunting
For business directory or community information, visit www.fennimore.com

CARR VALLEY CHEESE COMPANY

This locally owned and operated business is over 100 years old. Known for making cheese the old-fashioned way, it's a must stop for visitors to the driftless region. The cheese company produces more than 50 original varieties. Don't forget to pick up some sausage, cheese curds, maple syrup, wine or beer and much more. Now serving Chocolate Shoppe ice cream. Hours of operation 9 a.m. to 6 p.m. Monday-Saturday, and Sunday 10 a.m. to 4 p.m. We practice social distancing inside or call ahead to order curbside pick up 608-822-6416.



FENNIMORE AREA CHAMBER OF COMMERCE

Always **MORE** to offer in FENNIMORE!

MUSEUMS

- Fennimore Doll & Toy Museum
- Fennimore Railroad Museum

THE GREAT OUTDOORS

- Hunting
- Fly Fishing

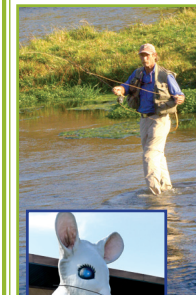
ACTIVITIES

- Outdoor Community Pool
- 9 Hole - Hickory Grove Golf Course
- Oakwood Nature Park with Disc Golf Course

SHOPPING ~ DINING ~ LODGING

TRAVEL • RELOCATION • BUSINESS INFORMATION

Fennimore Area Chamber of Commerce Office
850 Lincoln Avenue, Fennimore, WI 53809



Fenway House Hotel & Banquet Hall

Extra safety measures taken for everyone's health!

- Cozy Lounge Areas
- Grab & Go Breakfast
- 14 Guest Rooms
- Many Rooms Feature: Large Whirlpool Tubs, Free WI-FI & More

The hotel is a quaint, comfortable, friendly place to stay in the heart of the Driftless area!

1096 LINCOLN AVE, FENNIMORE, WI
(608) 822-3782 • fenwayhousehotel.com

Check out calendar of events at www.fennimore.com • For more information: 800-822-1131 • promo@fennimore.com

Exploring

GALENA

Thousands of years ago, Ice Age glaciers thundered down from the far north, leveling hills and valleys in their path. When they came to the idyllic land we call Galena and Jo Daviess County, they inexplicably divided, detoured, and spared the primal beauty of rolling hills and rugged cliffs.

Native Americans called this land Manitoomie, which means "Sacred Ground," or "god's Country." They mined Jo Daviess County's rich deposits of lead ore long before French explorers of the late 1600's discovered the mineral treasure. Congress created the Upper Mississippi Land Mine District in 1807 and Galena's first trading post was built in 1819. four years later the first steamboat ascended the Mississippi.

Visitors and Galenians alike – some of whom trace their ancestry back to lead miners, steamboat captains, and early farmers – appreciate in common the bounty of Galena: the living history that bricks and mortar and time can speak, the warmth of a people who left the hurry behind and the beauty of the

land the Ice Age missed.

This quaint community is vast with visitor appeal. Wineries, restaurants, galleries and shops galore are tourist favorites. Explore the Ulysses S. Grant home or view three states from the Horseshoe Mound located on the outskirts of Galena. Beautiful bed and breakfasts line many streets and bluffs in the city. Enjoy the trails and waterway through the city itself.



GALENA CELLARS Vineyard & Winery

515 S. Main St. • Galena, IL 61036
website: Galenacellars.com

Treat Yourself to a Night of Romance



- Oversized Rooms with Sitting Areas
- Free Hot Breakfast • Indoor/Outdoor Pool
- Hot Tub • 24 Hr Coffee/Tea Bar

Rooms Have:

- Microwave/Refrigerator
- Balconies or Patios • In-room Coffee



BEST WESTERN Designer Inn and Suites

9923 US 20 West - Galena, IL 61036 • 815-777-2577
www.BestWesternDesignerInn.com

OPEN DAILY:
AUG 16 - OCT: 9 AM - 5 PM
NOV - DEC 23: 9 AM - 4 PM



21 Apple Varieties, Cider Donuts, Specialty Foods, Gifts & More!

DATES

AUG. 16
SEPT 4-6
SEPT 10-12
SEPT 17-19
SEPT 24-26
OCT 2-3
OCT 9-10
OCT 16-17
OCT 25-DEC 13
OCT 23-24
OCT 30-31
NOV 6-7
NOV 11-12
NOV 13-14
NOV 19-21
NOV 19-28
NOV 26-28
NOV 29
DEC 4-5
DEC 15-23
DEC 15
DEC 23

EVENTS

Opening Day at Sunrise Orchards 9 am - 5 pm
Labor Day Sale at Sunrise Orchards 9 am - 5 pm
Donut Weekend at Sunrise Orchards 9 am - 5 pm
Honeycrisp Weekend at Sunrise Orchards 9 am - 5 pm
Gays Mills Apple Fest 9 am - 5 pm
Cheese Curd Weekend at Sunrise Orchards 9 am - 5 pm
Caramel Apple Weekend at Sunrise Orchards 9 am - 5 pm
Potatorama at Sunrise Orchards 9 am - 5 pm
Gift Box Shipping Mondays at Sunrise Orchards
BOGO Number 2 Grade Apples at Sunrise Orchards 9 am - 5 pm
Trick-or-Treat at Sunrise Orchards 9 am - 5 pm
Evercrisp Weekend at Sunrise Orchards 9 am - 4 pm
Veteran's Day Sale at Sunrise Orchards 9 am - 4 pm
Cider Weekend at Sunrise Orchards 9 am - 4 pm
Pre-Thanksgiving Sale at Sunrise Orchards 9 am - 4 pm
Deer Hunter Specials at Sunrise Orchards 9 am - 4 pm
Black Friday Sale at Sunrise Orchards 9 am - 4 pm
Cyber Monday Sale at Sunrise Orchards 9 am - 4 pm
Christmas Celebration & Craft Sale at Sunrise Orchards 9 am - 4 pm
Customer Appreciation Days at Sunrise Orchards 9 am - 4 pm
Community Chili Dinner at Sunrise Orchards 4 pm - 6:30 pm
Last Day of the Season at Sunrise Orchards 9 am - 4 pm

48340 State Highway 171 • Gays Mills, WI 54631
(608) 735-4645 • www.SunriseApples.com • Online Store Open 24/7
Follow Our Blog: SunriseApples.com/blog

Exploring GAYS MILLS

Gays Mills is a small community north east of Prairie du Chien, Wisconsin, located at the junction of Highways 171 and 131 and adjacent to the Kickapoo River. The history of the town's name goes back to 1847, when James B. Gay, a civil engineer and a native of Indiana traveled to the then unsettled Kickapoo Valley. Impressed with acres of untouched forest and a river with a good rock bottom he built a dam and a saw mill which proved to be a flourishing success. Because of failing health, James persuaded his brothers John and Thomas to come to the valley and help him in the business. In 1865 many families moved to this community, which by mutual consent bore the name of Gays Mills in honor of the founder and his brothers.

Also historically linked with Gays Mills are still flourishing apple orchards which first received recognition by winning first place at a national apple show in New York in 1905.

Today several orchards remain to carry on the horticultural tradition, with new plantings of apples, cherries, grapes, Christmas trees, pumpkins, strawberries and raspberries. Orchard salesrooms offer these products, along with their own baked goods, other Wisconsin products such as cheese, sausage, jams, jellies, maple syrup, sorghum, popcorn, syrups, mustards, and more.

Exploring

LANCASTER

Lancaster, situated atop a ridge in the Driftless Region, is located on fertile uplands surrounded by



rotunda and murals are striking examples of public building architecture. The grounds of the courthouse contain statues and monuments attesting to the rich history of the area. In fact, the square is the site of the first publicly conceived Civil War monument in the United States. The square is also home to one of just two known Blue Boy Statues representing the Union Soldiers of the Civil War.

The shops and offices surrounding the square are classic examples of turn of the century architecture indigenous to this part of Wisconsin. From modern



wooded valleys and striking rock bluffs. Lancaster is home to the Grant County Fair, one of the oldest in the state, and enjoys community events that draw visitors year-round.

Lancaster is well known for its historic courthouse square which features the magnificent Grant County Courthouse. A stroll a-round the Courthouse Square in Lancaster can carry the visitor to an earlier time in Wisconsin history. The most striking feature of the square is the Courthouse itself, which boasts a glass and copper dome patterned after St. Peter's Basilica in Rome. The dome can be seen from miles around and is iconic to Lancaster's image. Inside, the



fashion, to fantastic gifts, to locally made foods, these shops give you a taste of life in Lancaster today.

Lancaster City Hall is listed on the National Register of Historic Places and is a classic example of prairie - style architecture made popular in the early 1900's. Today the city hall houses the restored community movie theatre as well as the municipal offices.

Located just off the square is the

Karla's Kitchen LLC



HOURS:

WED/THUR 7AM-1PM

FRI/SAT- 7AM-8PM

SUN- 8AM-12PM

FRIDAY NIGHT: FISH FRY
SATURDAY NIGHT: PRIME RIB

Pizza Menu Available Friday & Saturday Nights

723-3393 103 N. MADISON ST. •
LANCASTER, WI

Wood-n-Brush
GIFT SHOP

- ★ Unique Gifts
- ★ Original Artwork
- ★ Custom Quilts
- ★ Hand Painted Furniture
- ★ Home Decor
- ★ And So Much More!



ON THE SQUARE, LANCASTER • 723-4108

Hours: Monday - Friday 9-5; Saturday 9-3





Lancaster

WISCONSIN



June 19 • Brews & Blues

3pm - 8pm Brews and Blues is a music and beer festival. Music, beer, wine, food, and fun, brought to you by the Lancaster Area Chamber of Commerce! Get your tickets and check out event details by visiting brewsandblueswi.org



July 15 • Night on the Square

5pm - 9pm Gather with friends, family and neighbors Thursday, July 15th for Lancaster's 25th Annual Night on the Square. Enjoy games, food, dancing and more! Performances by America Best Karate, Gotta Dance Academy, and ending with our main music feature performing live at 7pm.



August 18-22 • Grant County Fair

One of the oldest fairs in Wisconsin, the Grant County Fair features a tremendous 4-H and FFA show of livestock, crafts, and other activities. It also features a full midway, grandstand events, and delicious local foods.



September TBD • Sip'n Shop

3pm - 6pm A self guided wine tasting tour. 150 tickets sold. Guest 21 years and older are invited to sample wine while strolling between the downtown businesses and shopping exclusive specials just for event guests. Tickets are available at lanasterwichamber.weebly.com


LANCASTER
AREA CHAMBER OF COMMERCE
PHONE: 608.723.2820
LANCASTERWICHAMBER.WEEBLY.COM



STAY WITH US AT OUR NEW HOTEL!

1600 South Madison Street
Lancaster, WI 53813
lancastersleepinn.com

Exploring

LANCASTER

Cunningham Museum, as a showcase of Grant County's vibrant past. The Museum is named after Dr. and Mrs. Wilson Cunningham, who donated their home to found the museum. The museum features a medical exhibit with artifacts donated from Dr. Cunningham's office. It also holds artifacts from all periods of Grant County's storied history including a wealth of information on the area's first African American settlement, Pleasant Ridge, just southwest of Lancaster. The Museum has just recently expanded and has even more room to display Grant County's rich history.

Visitors can stroll through one of our many well-manicured parks, play a round of golf at our beautiful 18 hole golf course, or take a walking tour of our neighborhoods full of historic homes ranging from Frank Lloyd Wright to

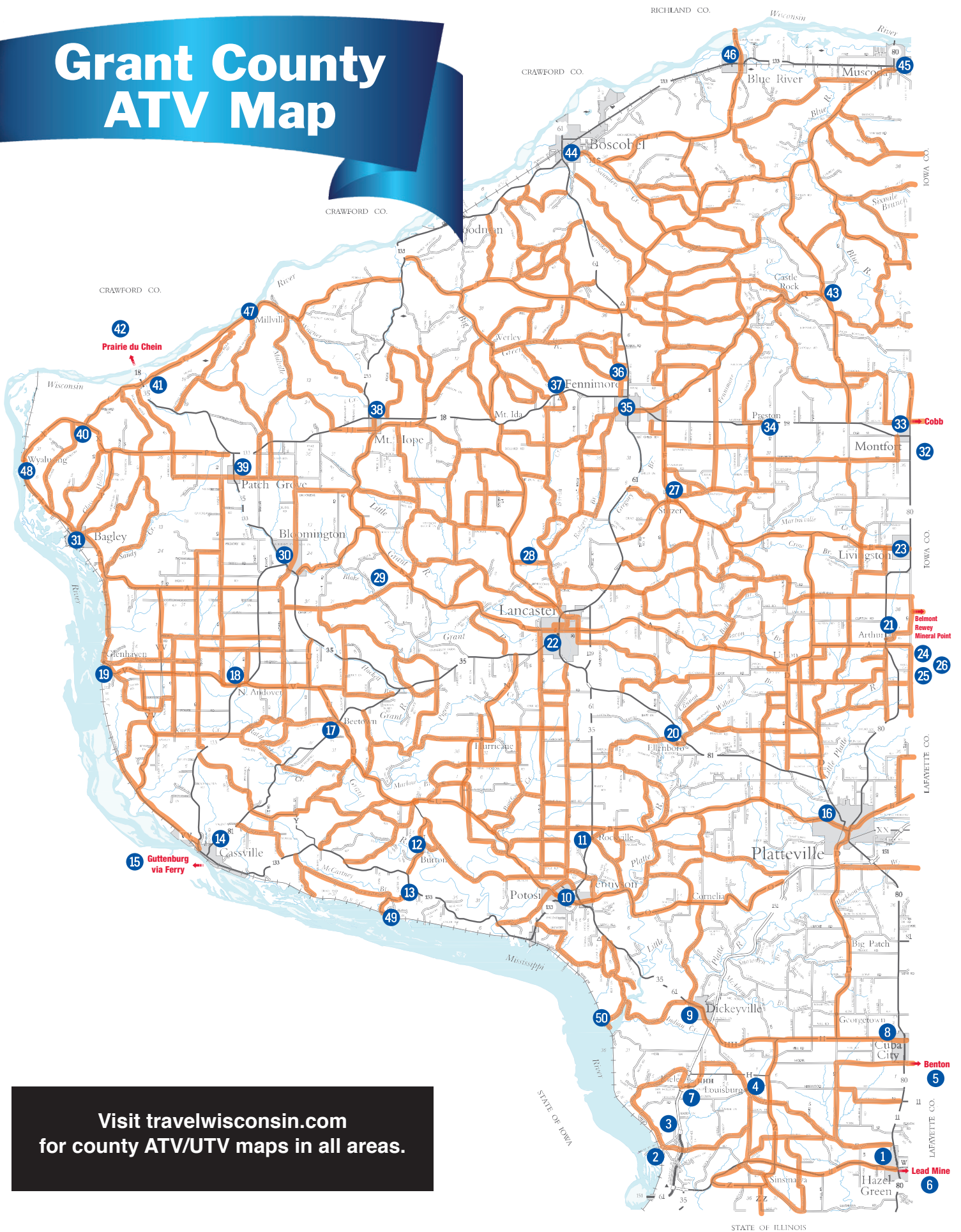
Queen Anne architecture. Lancaster is also proud of their new public pool available to enjoy throughout the summer months.

One of Lancaster's must sees is Vesperman Farms located just south of town. Vesperman farms has been around since 1900, the farm has passed down through the family. Now a registered Century Farm and in the hands of its fifth-generation owner the farm is now a destination for weddings, picking strawberries & pumpkins, making donuts, ice cream and fall fun. It's become a destination for families and friends to come together and celebrate great moments.

There is also no shortage of activities for the outdoor enthusiast as Lancaster is surrounded by some great highways for cycling and excellent trout streams for fishing.



Grant County ATV Map



Visit travelwisconsin.com
for county ATV/UTV maps in all areas.

Exploring

MINERAL POINT

This is where the lead rush of the 1820's began – in the hills of Mineral Point. The city is named for the Point at which the “mineral” was discovered. In 1829, it became the Iowa County seat and by the 1830's it was a bustling, growing city that attracted many politically significant and influential people. Henry Dodge, the first Territorial Governor of Wisconsin, was

inaugurated here on July 4th, 1836.

Today, Mineral Point is a place where makers and dreamers have been molding a creative community for decades. There are potters and painters, weavers and woodworkers, print makers and pizza makers, glass artists and jewelry makers, sculptors and music makers, photographers and farmers and award winning cheese makers (because this is Wisconsin!) Come visit and spend time with artists in their galleries or studios. Stay a little longer and take a class at Shake Rag Alley Center for the Arts to nurture your creative side.

Historic buildings are treasured here and many have been re-birthed to accommodate new uses while preserving our architectural heritage. Stroll downtown or take a drive around town to soak in the charm of 19th century architecture that was crafted by early residents and

restored by modern craftsmen.

We invite you to stay awhile and enjoy some Midwestern hospitality – dine with us, shop in unhurried leisure and at the end of the day, cozy up in a century old guest house or modern hotel.

PENDARVIS HISTORIC SITE

Bob Neal and Edgar Hellum, business and life partners, purchased and rehabilitated their first stone cottage at the height of the Great Depression, setting off a historic preservation movement. Built by Cornish settlers in the 1840s, the collection of stone buildings became known as Pendarvis.

SHAKE RAG ALLEY

Shake Rag Alley located in Mineral Point has a wide array of activities. The nine buildings include a wide array of workshops, performing arts, and historic paths of gardens and trees. Classes are available year round and summer classes happen under trees or tents.



- DELUXE CONTINENTAL BREAKFAST
- BANQUET/MEETING FACILITY FOR 400 PEOPLE WITH BAR
- LUXURY WHIRLPOOL SUITES
- GUEST LAUNDRY
- FREE LOCAL CALLS
- DATA PORTS IN ALL ROOMS & FREE WI-FI
- IN ROOM SAFE
- COFFEEMAKERS
- HAIR DRYERS
- ALARM CLOCK
- IRON & IRONING BOARD
- REFRIGERATOR & MICROWAVE

Amenities include:

- INDOOR POOL & WHIRLPOOL
- GUEST COMPUTER IN LOBBY

MINERAL POINT, WI

1345 Business Park Road
Phone: 608-987-4747 • 866-987-4747
Fax: 608-987-4545



Tony's Tap

Bar  Grill

Est. 2007

OPEN:

Tuesday – Sunday
11 am til close
Closed Mondays

10A Commerce St
Mineral Point, WI
(608) 987-2211
www.tonystap.com

"Iowa County's BEST Burgers"





Emission Solutions

856 Fair Street,
Mineral Point, WI 53565

PAID
VACATION
DAY 1

COME
Explore
a NEW
JOB
with
Us!



Call or text
608-425-0624
to schedule
an interview
after you have
completed your
online application.

*To view job openings
and apply online, go to*

careers.cummins.com

At Cummins, we are dedicated to diversity in the workplace and our policy is to provide equal employment opportunities to all qualified persons without regard to race, age, color, sex, religion, national origin, disability, veteran status, sexual orientation, gender identity and/or expression or other status protected by law.



Alley Stage, located on Shake Rag Alley, offers original plays on an outdoor stage.

GUNDRY HOUSE MUSEUM

The Mineral Point Historical Society maintains the Gundry House Museum to preserve Mineral Point's history and to display the Gundry House

in its Victorian-era splendor. The Gundry House Museum is an impressive example of an Italianate-style home that is built of finely crafted local sandstone. Joseph and Sarah Gundry came in the 1840's from Cornwall, England, and built their home in 1868. Their estate was known as "Orchard Lawn" due to its large apple orchard, pasture and

gardens. Gundry was a partner with John Gray in the dry goods business of "Gundry and Gray". Their store was widely known for its extensive stock of clothing and house wares. After the last of the local family members passed away in the 1930's, the Mineral Point Historical Society was formed to acquire the house and use it to interpret the Gundry's place in the local history.

The Gundry House Museum has period rooms as they would have appeared during the late 1800's and displays of Mineral Point's wide ranging history.

MINERAL POINT ROOM

Tucked down in the basement of the Public Library, behind barred windows, is one of the most valuable Mineral Point treasures of the past: the Mineral Point

room, also known as "Mineral Point's Root Cellar." The barred windows, by the way, are the reminders that this space was once used for the city jail.

The collection got its start in 1981 with a large donation of materials from Robert Neal, who along with Edgar Hellum restored the Pendarvis Complex. His donation included 400 books, many maps, photographs, local newspaper files, letters and other written documents, all relating to the Mineral Point area.

These materials formed the nucleus of the Mineral Point Room collection,



which has been increasing in size and depth steadily ever since with donations of materials from individual donors.

THE MERRY CHRISTMAS MINE

The Merry Christmas Mine at Mineral Point was one of a few large zinc mines in the United States operating between 1906 and 1913. In underlies the eastern part of Mineral Point Hill where the original discovery of lead ore was made about 1825 and where much early mining was done between 1830 and 1855.

Today the Merry Christmas Mine is a part of the Merry Christmas Mine Prairie, a 43 acre area that includes a number of educational walking trails highlighting early crevice mines and "badger holes". The Merry Christmas Mine Prairie is one of the largest in the area and features a wide variety of native grasses and plants.

POINTER CAFE



- Fresh Cornish Pasty
- Homemade Soups and Pies
- Daily Specials
- Family Dining with Kids Activity Area
- Carry Outs Available
- Sr. Citizen Discount
- Small Group Accommodations
- Visa, Mastercard, and Discover Accepted

608-987-3733

Hwy. 151 Exit 37
Mineral Point, WI

HOURS:

Monday through Friday 5:30 a.m. to 7:00 p.m.
Saturday & Sunday 6:00 a.m. to 7:00 p.m.

Red Rooster CAFE



Homemade Cornish
Pasty, Figgyhobbin
and
Bread Pudding

608-987-9936

OPEN Wed thru Mon
7 a.m. - 3 p.m. (closed Tues)

158 High Street
MINERAL POINT

Exploring

MONTFORT

Montfort is located just north of Livingston on Highway 80. This small town is big on community spirit and contains a lot of history. Visitors enjoy a quiet relaxing atmosphere in a rural setting. Wild animals such as deer, wild turkey, birds, and other game are plentiful in the area. Any outdoorsman would love the area's surrounding sites to camp and fish. On your tours of southwest Wisconsin make sure to mark Montfort on your list of places to see.

It was in August of 1827 that Richard H. Palmer, following the Indian trail, stopped in the ravine which is now known as Main Street. Tossing his pack on the ground, Dick Palmer entered the ravine and commenced parting the high grasses in his effort to locate fresh water. Following the stream up the ravine, he soon discovered a beautiful spring on the lot.

East of Montfort along Highway 18 sits the Montfort Wind Farm. Twenty massive wind turbines stretch along the highway from Montfort to Cobb. Developed by FPL Energy and Enron Wind, the turbines generate 52,000 MW hours of power per year. Based on the U.S. average fuel mix, the 1.5 MW wind turbines can be expected to annually offset approximately 81 million pounds of carbon dioxide (greenhouse gas), 420,000 pounds of sulfur dioxide (major cause of acid rain), and 260,000 pounds of nitrogen oxides. The Montfort Wind Farm is Wisconsin's largest wind energy facility.

To kick off Summer in Montfort the Montfort VFW post 9298 has their annual Big Days the first weekend of June. This fabulous weekend event includes softball games, volleyball games, a walk run, a BBQ Contest, the Red Bandana Run, concession stand along with brats, burgers and music at the

beer tent, not to mention the best BBQ Chicken dinner and parade on Sunday. It is a wonderful community event and continues to grow each year. A perfect way to honor our Veterans.

The Montfort Fire Department has their Ultimate Raffle every April which is another great way to bring the community together and raise money for our wonderful fire department.

Montfort also offers great food and fun at the local bars and restaurants, a great grocery store and many other businesses makes this little town the perfect place to visit, along with the beautiful pool, park and library downtown. You will always find friendly folks in Montfort.

**Rural Route 1
POPCORN®**

— SINCE 1983 —

OPEN DAILY!

FREE SAMPLES! HWY 18 IN MONTFORT

www.ruralroute1.com



Exploring

MUSCODA

Muscoda is the largest village in Grant County. Incorporated as a community in 1894, the community once known as 'English Prairie' is a tale of two communities changed by the times.

Once thought to be a major port on the Wisconsin River for the lead mining industry in the hills south of the community, Muscoda changed its focus.

With the introduction of the railroad the community slowly moved. The main street that once ran parallel to the banks of the river turned to its present north/south orientation.

Muscoda remains a strong farming and industrial community to this day with a large industrial base envied by many other communities of the same size and why not? With the back drop of majestic rolling hills and the hardest

working river in America.

Muscoda, which means "Prairie of Flowers," is a growing community of almost 1,300. Located in the heart of the Lower Wisconsin State Riverway and nestled in the corner of three counties – Grant, Iowa & Richland – Muscoda, is conveniently located at the junction of Hwy 80 and Hwy 60. If you are traveling on the beautiful 100-mile Scenic Lower Wisconsin River Road, Highway 60, which follows the graceful curves of the Wisconsin River, be sure to stop and visit Muscoda.

Muscoda is a nature lover's dream with access to thousands of acres of public land on which to hunt, fish or hike. The winding country roads can be enjoyed by auto, motorcycle or the hearty bicycle rider to view the many

wildflowers or vibrant fall colors. If winter's snow holds your interest, then enjoy a ride on the many snowmobile trails in the area or do some cross



**Riverdale
Veterinary Clinic**

127 HWY 133 & 80 • Muscoda
(608) 739-3123



We Service...

Muscoda • Richland Center
Boscobel • Highland
Spring Green • Viola • Dodgeville



is complete with showers, electric hook-up or primitive campsites, and a dump station. Adjacent is a playground and picnic area. Within walking distance there are horseshoe pits, ball field, tennis courts and a public swimming pool. Be sure to visit

Capital.” It is so extreme you’d think there was gold in them hills. Muscoda, is located in the heart of the Lower Wisconsin State Riverway following the graceful curves of the Wisconsin River. The Morel Mushroom Festival is



country skiing.

In the summer take a relaxing canoe trip down the scenic Lower Wisconsin River or try your luck at fishing. Muscoda offers the only riverbank campground of its kind along the 90 miles of the Wisconsin River as it serves both water and highway travelers. The campground

the Muscoda Area Veteran’s Memorial, erected in 2009, located on Wisconsin Avenue at the west end of the Victoria Riverside Park.

Morel mushroom fever strikes Wisconsin every spring. In 1982, Muscoda acquired the title of “Wisconsin’s Morel

MUSCODA

CAMPGROUND

\$25 with Electric

\$10 without Electric

- Additional Charge With Over 5 People per Site
- Prepayment Required
- Bathhouse with Pay Showers
- Dumping Station Available
- Public Swimming Pool Within Walking Distance
- 3 Picnic Shelters

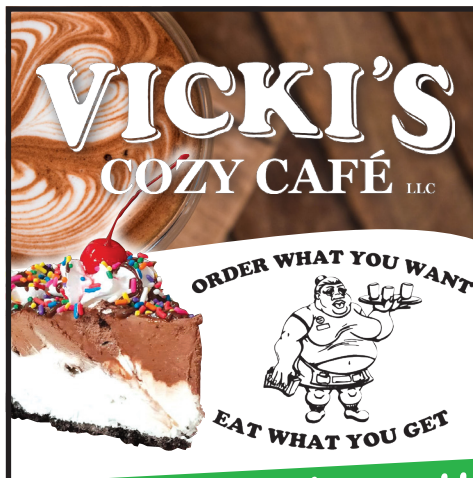
TO RESERVE:

CALL: 608-739-2924

EMAIL: Rivercamping53573@gmail.com



ADVENTURE AWAITS!



Everyone Welcome!!

BREAKFAST & LUNCH

Homemade pies & Friday Night Fish Fry

Enjoy our tasty food!

Pancakes, Eggs,
Omelets, Burgers,
Salads, Wraps,
Sandwiches & more!



Call ahead! (608) 739-9004
132 N. IOWA ST. MUSCODA, WI

held annually the weekend following Mother’s Day with activities for the whole family. It’s the perfect day trip and opportunity to join thousands of morel maniacs from around the region as they come to buy morel mushrooms.

Muscoda, is also widely recognized as being the home of renowned metal sculptor Ellis Nelson, whose works produced at his shop in Muscoda for several years have garnered worldwide recognition and publicity. He was featured on “Good Morning America” and on CNN. In 2013 his son, Tom Nelson, took over the business.



BELMONT MOUND STATE PARK

The Belmont Lions Club operates and maintains this park. Belmont Mound, an outlier of the famed Niagara dolomite escarpment, reaches nearly 400 feet above the Village of Belmont. From the 64-foot observation tower on top, you can see for many miles in all directions. The wooded mound abounds in berries and wildlife. It has picnic and playground facilities but no camping.



BLUE MOUND STATE PARK

Spectacular view of the countryside from the highest point in southern Wisconsin. Observation towers, wooded campsites, swimming pool with a lift for people with disabilities, picnic areas and hiking, and nature and cross-country ski trails offer year-round recreation. Rustic cabin for people with disabilities. 4350 Mounds Park Rd., Blue Mounds.



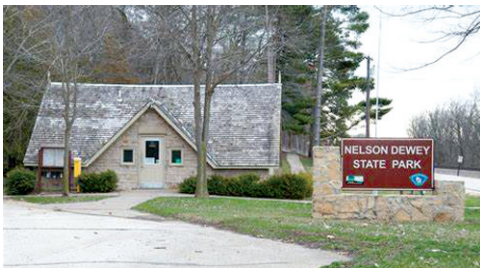
DEVIL'S LAKE STATE PARK

An Ice Age unit where 500-foot bluffs flank a 360-acre lake. Swimming, fishing, boating (electric motor only), canoeing, scuba diving, hiking, nature center S5975 Park Rd, Baraboo.



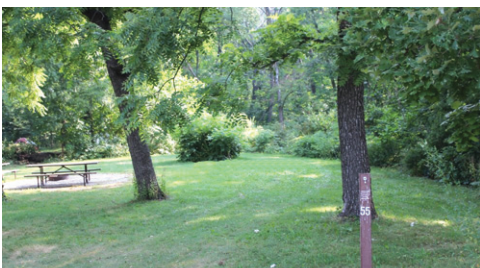
GOVERNOR DODGE STATE PARK

5,000 scenic acres of steep hills, bluffs and deep valleys, plus two lakes offering swimming, fishing and boating (electric motors only). Hike through oak-hickory woods, ride horses over rolling hills, picnic near sandstone bluffs. 4175 Hwy. 23, Dodgeville.



NELSON DEWEY STATE PARK

Take in a panoramic view of the Mississippi River or relax in wooded campsites atop the bluffs overlooking the Mississippi. Visit Stonefield, home of Wisconsin's first governor, Nelson Dewey, and Stonefield Village [exit DNR], a reconstructed 1890 village. Open year round. 12190 County Rd V V, Cassville.



NEW GLARUS WOODS STATE PARK

At this park near the Sugar River Trail, you'll find camping as it was intended, with drive-in or hike-in campsites of quiet solitude. A picnic area and playground. Nature trails lead to wildlife and the beauty of undisturbed woodland. W5446 County Trunk Highway NN, New Glarus.



TOWER HILL STATE PARK

Visit the park's restored shot tower and melting house to see exhibits on lead shot making from the 1800s. Just two men, using picks and crow bars, tunneled 120 feet down and 90 feet horizontally through the rock. Challenging bluff trails, panoramic views, camping (first-come, first-served), and canoeing and fishing on the Wisconsin River. Open May through October. 5808 County C, Spring Green.



WYALUSING STATE PARK

The Wisconsin Ridge Campground overlooks the Mississippi and Wisconsin rivers 500 feet below. Scarlet tanagers and wild turkeys are among the more than 100 bird species spotted on one-day field trips. 13342 Cty. Hwy. C, Bagley.



YELLOWSTONE LAKE STATE PARK

One of the few lakes in the driftless area, 450-acre Yellowstone Lake is popular for ice fishing and other water sports. The park adjoins the Yellowstone Lake State Wildlife Area. 8495 Lake Road, Blanchardville.

Courtesy of Wisconsin Dept. of Natural Resources

VISIT THE WORLD'S LARGEST



Platteville

Southwest Wisconsin

ATV & Snowmobile Trails ♦ Biking
Fishing ♦ Paddle the Platte River ♦ Golfing
Miles of Paved & Lit Non-Motorized Trails
Climb 266 Stairs Up the World's Largest 'M'

TRAVEL
WISCONSIN
WELCOME CENTER

275 W. Business Hwy. 151
Platteville, Wisconsin

May-Oct.: Mon-Fri. 8a-5p,
Sat. 10a-4p, Sun. 10a-2p

Nov.-April: Mon-Fri. 8a-5p

www.platteville.com

★ Free Maps
& Brochures

Exploring

PLATTEVILLE

THE MINING & ROLLO JAMISON MUSEUMS

Your underground adventure awaits at The Mining & Rollo Jamison Museums in Platteville, Wisconsin. Visitors tour the 1845 Bevans Lead-Zinc Mine, ride in a genuine 1931 mine train (weather permitting), and discover the local history of the Tri-State area's Upper Mississippi Valley mining district. The museums trace the development of regional culture starting with mining and the establishment of rural communities.

The exhibit galleries include the historical one-man collection of Rollo Jamison, who was born in nearby



Beetown in 1899 and started collecting arrowheads on the family farm as a boy. His life-long interest in the objects used by pioneering people in their everyday

lives grew to a collection of over 20,000 items of regional significance. Museum exhibits take you back to the turn of the century with exhibits of carriages, farm implements, tools, a general store, a kitchen and parlor, musical instruments and much more.

A guided Mine Tour includes a walk down 90 stairs into the underground Bevans Mine, an 1845 mine that produced over 2 million pounds of lead ore in one year. It also includes a visit to the headframe building, where you can see how ore was hoisted from a mine and hand sorted, and an amusement ride through the beautiful 2.5-acre museum campus on a train pulled by a genuine 1931 locomotive from an area mine.



Your Underground Adventure Awaits!

Year-Round Online Programs & Virtual Tours
Open Daily May-October for Guided Mine Tours,
 Self-Guided Museum Tours & Train Rides
 Check Out Our Museum Store Online!



405 EAST MAIN STREET | PLATTEVILLE
www.mining.jamison.museum
 (608) 348-3301

24 Hour
PUMPS

**America's
 Homegrown Fuel**
**Badger State
 Ethanol, LLC**
608.329.3900

1290 US Bus Hwy 151 • Platteville



PLATTEVILLE

THE WORLD'S LARGEST "M"

While in Platteville, look for the world's largest "M" east of the city. Constructed of limestone and weighing 400 tons, the giant "M" measures 214 ft. by 241 ft. The letter represents the first mining school in the United States.

In 1853, Platteville Academy built Rountree Hall, which later became the state's first Normal School and the Wisconsin School of Mines.

Today, the University of Wisconsin-Platteville is a merger of the Wisconsin School of Mines and the Platteville State Teachers College (founded in 1925). The "M" still remains to be part of the university's heritage.

To get to the "M", drive on Hwy. 151 exit 19 and go east one mile on County Rd. XX, then turn left (north) onto West Mound Road, which leads directly to the landmark. 266 newly constructed steps and several rest areas are provided for your "climb" to the top, but the view from the mound is worth it. Farmland as well as a birds-eye view of Platteville and the tri-states is spectacular, especially at sunset. Twice



a year the "M" is white-washed by UW-Platteville students who volunteer for the job and it is lit at UW-Platteville's homecoming.

The welcome is warmer in the Country.



- ◆ Complimentary breakfast
- ◆ Free high speed wireless internet
- ◆ Free weekday morning newspaper
- ◆ Indoor pool & whirlpool

800-333-3333

plattevillewi

630 South Water St. ◆ Platteville, WI ◆ (608) 348-7373

www.radissonhotelsamericas.com

Newly Remodeled Rooms!



- Continental Breakfast
- 72 Comfortable Rooms
- Deluxe Suites With Jacuzzi
- Cable TV - Movie Channels
- Solarium Enclosed Health Spa with: Jacuzzi and Sauna
- Free Wireless Internet

Economy Lodging & Much More

LOCATED WITHIN WALKING DISTANCE
OF RESTAURANTS AND WALGREENS

**100 Hwy. 80-81 South
Platteville, WI**

608-348-8800

Toll Free – 1-800-800-8000

Exploring PLATTEVILLE

CENTER FOR THE ARTS

The University of Wisconsin-Platteville Center For the Arts is comprised of five major components plus ancillary spaces. These include a 600-seat recital-concert-theatre space, a 250-seat playhouse, instrumental and choral rehearsal rooms, a public lobby, shop and dressing rooms.

Completed in April 1983 the center was remodeled in 2012. The facility provides ideal environments for campus teaching programs in music and theatre as well as serving as a roadhouse for groups of visiting artists. While the justification for its construction was primarily its value as an educational adjunct to the university, its role as a cultural center for the whole of southwestern Wisconsin was always a major consideration. Through wide and constant use it has truly served as a Center For The Arts for the Platteville Community, which for many years has been so vitally concerned with its cultural educational environment.



Come see for yourself what the Center For The Arts has to offer you....you'll be glad you did!



PLATTEVILLE'S VETERANS MEMORIAL

Located in Platteville's City Park, the Veterans Memorial is a time-honored memorial to remember all those who served our country. There are seven statues, each depicting a different war. The walkway contains engraved bricks from people, businesses, services who want to commemorate their names in the great City of Platteville. Come explore our Veteran's Memorial.



Open Daily

A place like home...

BREAKFAST ANYTIME

BUS. HWY. 151 • PLATTEVILLE • (608) 348-3041

Open 10 a.m.

HAPPY TASTES GOOD

BUS. HWY. 151 • PLATTEVILLE • (608) 348-8560



Make Your Way To Platteville's Main Street

 **Holistic Spiritual Gift Shop**
Owner: Peggy Jo Tipton
Crystals & Stones, Healing,
Jewelry For Holistic Lifestyle,
Clarity Breathworks,
Crystal Reiki
& So Much More
55 W Main Street • Platteville, WI
608-348-4009 • elementsplville@gmail.com
HOURS: Tuesday - Saturday • 10AM - 5PM
facebook.com/elementsllcpville
elementsplville.com

Ice Cream Shop
125 E. MAIN ST.
PLATTEVILLE
348-4995



Throwing 7's LLC
Hatchet Throwing
15 E. Main Street
608.732.0541
www.throwingsevens.com



Specializing In American
Made Products
Also Featuring:
AUSTIN'S
ANIMALS
AMERICAN ROOTS
76 East Main St | Platteville
608-778-5962



Authorized Dealer for:
PSE Bows,
Liberty Safes
BULLSEYE SPORTS
GUNS:
Buy • Sell • Trade
Full line of reloading supplies,
archery equipment and bow repairs
45 W. Main Street, Platteville
608-348-5656



Flavored Popcorn & Candies
Popcorn Kernel LLC
65 W. Main St.
Platteville
348-4407
Hours: Tues. - Fri. 10:00 - 5:00
Sat 10:00 - 4:00; Closed Sun. & Mon.



HEISER HARDWARE
Bottom of Main - Platteville
ACE 348-5231 ACE
Be Wiser - Buy Heiser!!

create
appreciate
educate
ROUNTREE GALLERY
120 West Main St
Platteville, WI
Please visit our facebook page and
website for hours,
classes and events.
routreegallery@gmail.com
www.routreegallery.org



Steve's Pizza Palace
Corner of Main and Chestnut Street
PLATTEVILLE
(608)348-3136
www.stevespizzapalace.com



Quality Consignment Shop
Men - Women - Children
New Country Giftware
Purses and Jewelry
Change of Seasons, LLC
85 E. Main Street • Platteville
608-348-7356
Owner: Lori Reddy
f LIKE US ON FACEBOOK



608-348-4446
Your
CBD Store
145 W.
Main Street
PLATTEVILLE
www.cbdthehive.com



COMMUNITY FIRST BANK
"First for You"
125 N. Center Street • Livingston • (608) 943-6351
170 W. Main St. • Platteville • (608) 348-2900
925 Wisconsin Ave. • Boscobel • (608) 375-4117
101 N. Wisconsin Ave. • Muscoda • (608) 739-3154
375 Lincoln Ave. • Fennimore • (608) 375-4117
www.CFBank.com



MITCHELL-ROUNTREE STONE COTTAGE

Built in 1837 by the Rev. Samuel Mitchell, the Stone Cottage stands today as it did over 150 years ago. Much of the interior is the original furnishings of the home which was the private residence of the Rountree family and kept in its original state until the 1960's when it was turned over to the Grant County Historical Society.

The Rev. Mitchell was a soldier during the American Revolutionary War under General Washington and present during the surrender of Cornwallis in Yourktown. Historians consider the cottage a "gem like no other in Wisconsin" with its two-foot-thick walls of dolomite Galena limestone.

Rev. Mitchell was the father-in-law of Major John Rountree, one of the founders of Platteville.

Major Rountree superintended the building of the house for the Rev. Mitchell, who had moved to Platteville in 1837.



Mitchell lived there until his wife's death in 1842. He died in 1855 in Missouri, and his remains lie buried in Platteville at the Hillside Cemetery. Major Rountree eventually bought the house.

The house has some unusual features. Among them are that each room contains a real fireplace. There is no kitchen. This was located some fifty feet away from the house in a separate building. The dining

room wing and the kitchen were connected with a covered walk.

Servants carried food back and forth from the isolated kitchen to the house. The food was brought up to the opening (with a slide) in the wall of the dining room. Here many hands grabbed the food containers and served the master's family and guests.

Visitors may tour the Stone Cottage from May through October and select dates throughout the year. To verify open dates and times call the Platteville Area Chamber of Commerce at (608)348-8888.



TRAIL SYSTEM

Platteville Offers miles of trails for everyone! Featuring over 10 miles of trails and nearly 200 acres of public open space within the city. Four hundreds overall acres include prairie, savannah and the Rountree stream. The connected trails can take users to Governor Dodge State Park, New Glare, Madison, Freeport, IL and more! The Rountree stream is located next to the trail and is a class 1 trout stream. The David Canny Rountree Branch trail offers miles of paved and lit trail and single track bike trail. The new

trail system is used by many local and visiting residents who enjoy exploring outside throughout the year. The trails are a collaborative effort and it should be understood to keep these trails clean and respected to have them for years to come for all to enjoy.

Local Trails: David Canny Rountree Branch Trail, Knoll Wood Park, Mound View Park, Platteville to Belmont Trail & Smith Park. For more information or to view the full map visit: plattevilletrailnetwork.org

MUSIC IN THE PARK

is held on Thursday evenings from 6 – 8 p.m.
in City Park June through August.



OPEN AT 10:30 AM

Home of the Butterburger®

Fresh Frozen Custard • Premium Chicken
Snackworthy Sides • Shakes, Malts & Floats • Flavor of the Day

375 US-151 BUS,
Platteville, WI 53818

(608) 348-9993

VISIT POTOSI - TENNYSON! Located in the Driftless Region of Southwest Wisconsin, Potosi-Tennyson showcases the Mississippi, Grant and Platte rivers, wooded valleys, limestone bluff outcroppings and stunning ridgetop views. Recreational opportunities abound including bird watching and photography, tubing, fishing, hunting, camping, boating, biking, snowmobile and ATV-UTV trails. Enjoy the drive on country roads and scenic highways and byways to explore all that we have to offer.

POTOSI BREWERY
209 S. Main St. Potosi, WI
608.763.4002

Beautifully restored and reopened in 2008 by the non-profit Potosi Foundation, the 1852 Potosi Brewery is the pride of Southwest WI showcasing award-winning craft beer. More than just a brewery, the Potosi Brewery Complex houses the Potosi Brew Pub and Restaurant with an outdoor beer garden and stage for live music and performances, The National Breweriana Museum and Research Library, The Great River Road Interpretive Center, The Potosi Brewery Transportation Museum and the Potosi Brewery Gift Shop, as well as, the Potosi Brewery Production Facility. The National Brewery Museum was recently recognized by Forbes Magazine as one of the top four beer museums in the world. Visit the Potosi Brewery website at www.potosibrewery.com for brew pub events and tour dates and times.

**HOLIDAY GARDENS
EVENT CENTER & WORLD'S
LARGEST CONE TOP CAN**
101 Brewery Hollow Rd., Potosi, WI
www.holidaygardensevents.com

Banquet hall for wedding receptions, anniversary parties, class reunions, business meetings, fundraisers, etc. Enjoy beautiful flower gardens and the world's largest cone top beer can for a unique attraction and great photo op.

THE ORIGINAL POTOSI SALOON
192 S. Main, Potosi, WI
608.763.2230

Great food, beverages, and entertainment. www.potosisaloos.com

**TWISTED VINES
PUB AND EATERY**
102 N. Main, Potosi, WI
608.763.2048

Great food, great drinks, great atmosphere. fb.com/twistedvinespub&eatery

POTOSI INN
Rooms to rent. Located above Twist-
ed Vines. www.potosiinn.com

HAVERLAND'S BAR
125 Tennyson St.
Potosi, WI
608-763-2373

Great food and
drinks

**TENOSI
PUMP N GO**
327 Hwy 61,
Potosi, WI
fb.com/tenosipumpngo -
608.763.2100

Convenience
store, gas station,
pizza, chicken, ice

cream, beer, and liquor. Serving break-
fast, lunch and dinner.

WHISPERING BLUFFS WINERY
196 S. Main St., 608.763.2468
www.whisperingbluffswinery.com

Showcases Wisconsin grown grapes
and locally produced wines inspired by
and named for the birds common to the
upper Mississippi Valley Flyway. The
winery features wine tastings, gourmet
chocolates, Wisconsin cheese, coffee,
art, and gifts.

DAVID WOODWORKS
196 S. Main St. Potosi, WI
608.763.2047

www.brightidea.work

Father and son local woodworkers
display and sell whimsical candle
sticks, furniture, walking sticks, lamps,
coat trees and more.

**BOTTLING BUILDING
ICE CREAM & GIFTS**
196 S. Main St. Potosi, WI

Serving Chocolate Shoppe Ice cream
& showroom for David Woodworks.



Grant River Tubin' Co
Potosi, WI • 608-763-4021
grtubin@tds.net

What better way can you spend a hot summer day?
www.granriver.com Find us on Follow us on

Visit! Potosi-Tennyson

Vibrant villages with breathtaking
views on Wisconsin's Great River Road
located in the Driftless Area!



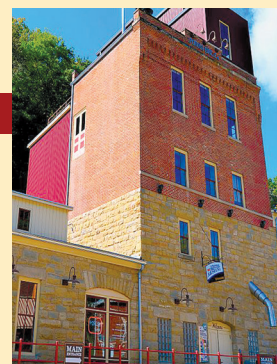
HOME OF THE POTOSI BREWING COMPANY

Annual Events

Catfish Festival
Sunday, August 8th

Potosi Brewfest
Saturday, August 28th

Back Home for Christmas
Saturday, November 13th



Potosi Tennyson Chamber of Commerce
are the recipients of the
2021 Best of River by River Travel Magazine

**Brewery Tours, Wine Tasting, Shopping, Museums,
Dining, Fishing, Camping & Outdoor Recreation**

Ad sponsored by the Potosi - Tennyson Chamber of Commerce
Contact our event host or check website for event updates

WWW.POTOSIWISCONSIN.COM

THE ROADHOUSE 2 BAR & GRILL

310 Roadhouse St., Potosi, WI
608.763.2341

Daily lunch specials FB: roadhouse2020

SCOOTER'S MIDWAY PUB

5979 Hwy. 35 & 61, Potosi, WI
608.763.2400

Bar/Restaurant-daily specials; Friday night fish fry. www.scootersmidwaypub.com

PINE POINT ONE STOP GAS STATION

608.763.2236

Gas station and convenience foods... coffee, soft drinks, grocery items.

PASSAGE THRU TIME MUSEUM

104 N. Main St. Potosi, WI

Explore the rich history of our community and rural life in SW Wisconsin, with exhibits on lead mining, agriculture, Native American artifacts, Mississippi River commerce and genealogy. Open Memorial Day thru Labor Day.

POTOSI POINT & OBSERVATION DECK

Extending a half mile into the Mississippi River and surrounded by a National Wildlife Refuge, the Point and the Potosi Point Observation Deck are a great spot to view 279 species of birds, various wildlife, sunrises and sunsets, river traffic, and the Mississippi River. Fish from the bank or use our boat ramp or pier.

DAKOTA HILLSIDE INN

4998 Co. Rd. N., Cassville, WI

Lodging available. www.dakotahillsideinn.com

POTOSI VETERAN'S MEMORIAL

210 N. Main St., Potosi, WI

A memorial to all Potosi area veterans with recognition to firemen, EMT and police who have served our communities.

PINE POINT LODGING

219 S. Main, Potosi, WI

608.763.2767

Cabins with modern amenities in the secluded woods on the Great River Road. www.pinepointlodgepotosi.com

POTOSI'S FRONT PORCH INN

122 S. Main St. - 608.763.4302

www.potosifrontporchinn.com

GRANT RIVER RECREATION AREA

A 73-site campground and park run by the U.S. Army Corps of Engineers located on the banks of the Mississippi River. The park has a boat ramp, shower facilities, playground equipment and picnic areas. <https://www.mvr.usace.army.mil/Missions/Recreation/Mississippi-River-Project/Recreation/Grant-River-Recreation-Area/>

GRANT RIVER TUBIN' CO.

608.763.4021

Lazy river tubing outfitters. www.granriver.com

Y'ALLBEE TUBIN, LLC

608.732.0618

Raft trip outfitters. www.yallbeetubin.com

GREAT RIVER ROAD CAR WASH

340 Hwy. 61, Potosi, WI

608.732.3769



Take one trip down the River and we're sure

Y'ALLBEE TUBIN & KAYAKIN

with us again!

ENJOY
a trip down
with a tube
or kayak!

Contact Us At:
608.732.0618 OR
563.580.0333

 yallbeetubin@yahoo.com • www.yallbeetubin.com

Exploring



RICHLAND CENTER

Richland Center, the county seat of Richland County, is in an area known as the Ocooch Mountains. Located at the junction of US Hwy. 14 and State Hwy. 80, about halfway between Madison and La Crosse, it's perhaps best known as the birthplace of legendary architect Frank Lloyd Wright.

The scenery is breathtaking, with high ridges, low valleys, natural rock formations, trout streams, wooded areas, and dairy farms. There are many outdoor activities to enjoy, including hiking or biking on the Pine River Recreational Trail, paddling or tubing on the Pine River, hunting or fishing, as well as birdwatching.

The Pine River winds through valleys, under a natural bridge, and boasts scenic views of bluffs and lowlands as it meanders south to the Wisconsin River. The lower Wisconsin River is large, relatively swift moving, and surrounded by hidden backwaters



to explore. The Kickapoo River is famous for its winding course and is a favorite of paddlers. The Richland County area is a kayaker's paradise. Contact Pine River Paddle and Tube LLC at 608-475-2199 to plan your day of fun.

For bicycling enthusiasts, the Pine River Recreation Trail stretches 15.8

miles from Richland Center to Lone Rock. In the City of Richland Center, the trail is located on top of the Pine River dike and has an asphalt surface. In the county the trail is located on an abandoned railroad bed and is constructed of well-compacted pea gravel. The trail is well maintained by County and City Park departments and parallels the Pine River. It's open year-round and is a favorite of hikers and bikers, as well as snowmobile riders in winter. You can also hike on trails located behind the UW Platteville-Richland campus.

Richland Center has numerous public parks, with Krouskop Park being the largest. Its features include a community-senior center, gazebo and newly constructed state-of-the-art aquatic center.

Other nearby parks include Pier Natural Bridge Park, located along Hwy. 80 North, at Rockbridge in Richland County. The park obtains

Alana Springs Campground

"Get away from it all... Go Camping!"

ALANA SPRINGS
has been
serving the
area for over
50 years!

Nestled in the beautiful hills of Richland County, the campground is located 4 miles from Richland Center and 3 miles from the fairgrounds.

22628 Covered Bridge Dr. • Richland Center, WI • 608-647-2600
mail@alanaspringscampground.com • www.alanaspringscampground.com

Richland Locker Company

Serving the area for over 82 years!

Call Today: 647-4577

HOMEMADE BRATS!

- ♦ Jalapeno Cheese
- ♦ Pineapple Teriyaki
- ♦ Pork Brats & Beef Brats
- ♦ Precooked Pork Brats
- ♦ Richland Center
- ♦ Mushroom Swiss
- ♦ Italian
- ♦ Swedish

& MANY MORE FLAVORS!

FRESH RIB-EYES

CUT FRESH WHILE YOU WAIT TO THE SIZE YOU WANT.

Call ahead for special order steak and we will cut them for you.

Cooked & Sliced BEEF & PORK

When you pick it up it is ready to eat!

FRESH GROUND CHUCK

GROUND DAILY

Frozen Hamburger Patties

COOK-OUT BUNDLES

For your summer grilling needs!

- 2 - RIB STEAKS
- 2 - T-BONE STEAKS
- 2 - NEW YORK STRIP
- 2 - PORTERHOUSE STEAKS
- 16 - HAMBURGER PATTIES

GET A RING OF OUR GRAND CHAMPION HOMEMADE RING BOLOGNA

QUEST ACCEPTABLE

HOURS: MONDAY - FRIDAY: 7:30-5:30, SATURDAY: 8:00 - NOON, CLOSED SUNDAYS
 590 South Main Street • Richland Center, WI

OAKWOOD FRUIT FARM, INC.

31128 Apple Ridge Rd. - Richland Center, WI

Over 20 varieties of apples, open mid August to Christmas.

Concord grapes ready early September.

Fresh homemade caramel apples.

Fresh apple cider.

Apple Cider Donuts and Other Baked Goods... Made Fresh Daily!

608.585.2701

Fax: 608.585.2008

Check us out!

www.oakwoodfruitfarm.com

Buying or Selling Rural Property?

15,000 ACRES
SOLD IN 2020



WEISS REALTY SOUTHWEST

FARMS, HUNTING LAND & RURAL HOMES



WEISS REALTY SOUTHWEST

FARMS, HUNTING LAND & RURAL HOMES

- Most experienced Land Specialist Team in SW Wisconsin (27 years)
- Locally owned and operated
- Specializing in rural properties, hobby farms, hunting land, cabins, farms and home acreages.
- Small town work ethic backed by proven nationwide marketing success.
- Weiss Realty sold over 200 rural properties in Western WI & Southeastern MN last year.
- No other brokerage can match our results in the bluff country region of Wisconsin & MN.

To Search All Available Properties
In Your Area, Please Visit:
WeissChoice.com

Call today for a **FREE**
Market Analysis to find
out the market value of
your property.



JAY FRAZIER

LICENSED IN WI

CELL: (608) 604-4006
EMAIL: JAY@WEISSCHOICE.COM



AARON DOBBS

LICENSED IN WI

CELL: (608) 289-7202
EMAIL: AARON@WEISSCHOICE.COM

For current listings please visit:
www.WeissChoice.com

Exploring RICHLAND CENTER



its name from the Pier family, who donated the land to Richland County to preserve the site as a park. The site has a very unusual geological feature – a half-mile long “finger” of blocked and layered sandstone rising nearly 60 feet above the flood plain of two merging valleys. This narrow finger is topped by tall pines and covered with green shrubs. The West Branch of the Pine River meets with the Main Branch underneath this rock formation, which forms a Natural Bridge. Ash Creek Community Forest is Richland County’s largest park at 354 acres. It is located two miles south of Richland Center on State Highway 80. Ash Creek, a Class One brook trout stream, runs through the middle of this recreational property. Fishing regulations are governed by the Department of Natural Resources. The Community Forest allows public hunting in season. There are four miles of primitive hiking, biking, and horseback riding trails.

Robins Nest

Country Gifts & Flowers

Unique one of a kind finds!

Shop Our Selection of Gifts,
Home and Seasonal Decor
& Floral Arrangements

Stop in for a visit!

383 W 3RD ST, RICHLAND CENTER
OR CALL: 608.383.1616

Boscobel BULLDOGS

DeSoto PIRATES

Highland CARDINALS

Hillsboro TIGERS

Ithaca BULLDOGS

Kickapoo PANTHERS

LaFarge WILDCATS

North Crawford TROJANS

Reedsburg BEAVERS

Richland Center Middle School

Richland Center HORNETS

Riverdale CHIEFTAINS

River Valley BLACKHAWKS

Royall PANTHERS

Seneca INDIANS

St. Mary School

Viroqua BLACKHAWKS

Wauzeka HORNETS

Weston SILVER EAGLES

Wonevot-Center WOLVES

MENTION THIS AD AND GET 30% OFF!

The Creative Outlet

**Handmade Gifts,
Consigned Clothing &
Scrapbooking
Products**

**WE HAVE YOUR SCHOOL'S
Custom Papers, Albums
and Embellishments**

We also carry a large line of papers and scrapbooking products featuring your favorite Clubs and Teams

Open 9 AM to 5 PM
Monday Thru Saturday
124 N MAIN ST, RICHLAND CENTER
(608) 383-3840

WWW.FACEBOOK.COM/CREATIVEOUTLETRC/

Exploring



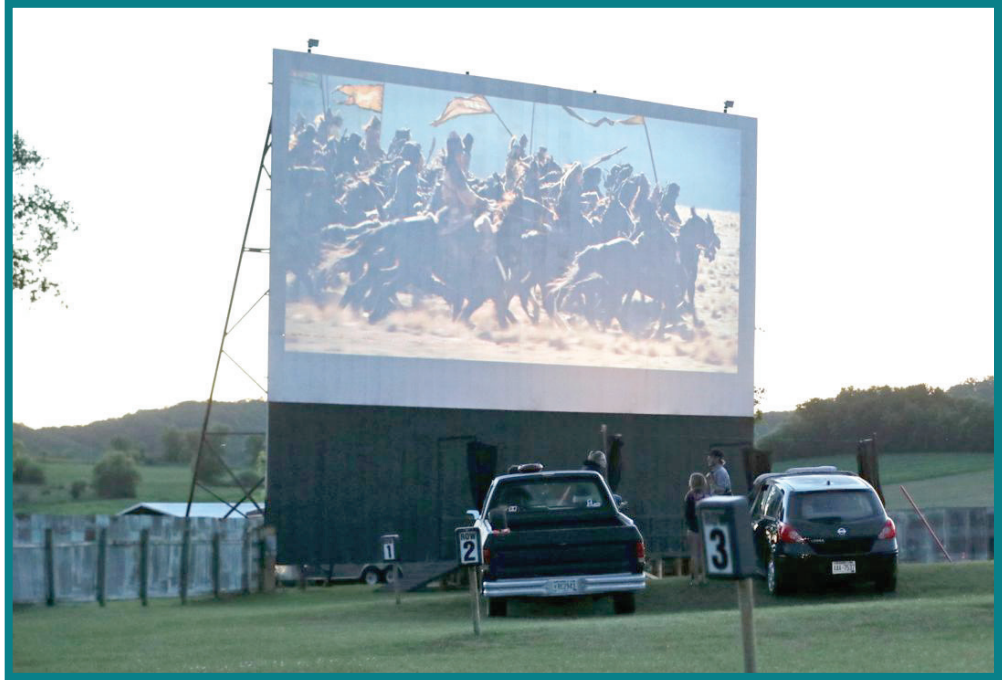
RICHLAND CENTER

No unauthorized, motorized vehicles are allowed in the forest. The site does not allow camping or fires of any sort. There are two parking lots with a capacity of fifteen vehicles each.

Not very far from Richland Center is Eagle Cave, 16320 Cavern Lane, Blue River (608-537-2988), which is open 10:00 a.m.-5:00 p.m., Memorial Day through Labor Day. Wisconsin's largest onyx cave offers camping, fishing, canoeing and hiking, as well as an in-cave exploratory program. Eagle Cave has over 3,000 feet of passage, featuring four main walking levels and four levels of subterranean tunnels.

Give your taste buds a treat with a visit to Wild Hills Winery or Oakwood Fruit Farm.

Wild Hills Winery, 30940 Oakridge Drive, Muscoda (608-647-6600), is located on an 80-acre parcel. Tram tours take guests around the site every Saturday, Sunday and summer holiday. Reservations are requested.



Guests will visit acres of orchard trees consisting of apples, peaches, Asian pears and cherries. After touring the land, guests can stop by the Winery for wine tasting and souvenir shopping.

Oakwood Fruit Farm, 31128 Apple Ridge Road, (608-585-2701), sits among the ridges and coulees directly east of Richland Center. The on-site shop is open from August 18 until the apples are sold out in December.

Take in a movie at one of Wisconsin's few remaining outdoor movie theaters, Starlite 14, located on US Hwy. 14 East in Richland Center (608-647-3669). Under new ownership, in addition to

movies shown on weekend nights, the drive-in is also a venue for other entertainment, including concerts and car shows.

June brings a whirlwind of activities, including the Wisconsin High School Rodeo State Finals, June 11-13; June Dairy Days and Rodeo Parade, Saturday, June 12, 10:30 a.m., downtown Richland Center; and the Richland County Dairy Breakfast, Sunday, June 19, Richland County Fairgrounds.

The Richland County Historical Society's Akey School Museum is open 1:00-4:00 p.m. on Sundays, June through September. From Richland Center, take Hwy. 14 East to Twin Bluffs Road, then in Twin Bluffs to County Hwy. TB, then south on TB to the museum.

Autumn is a busy time of year, with the Richland County Fair set for September 4-8; the Viola Horse & Colt Show scheduled September 24-25;

Come in and learn about our store credit program!



USED BOOKS FOR SALE AND EXCHANGE!

190 E. Main St., Reedsburg

608-415-READ

mymainstreetbooks.com

"Keeping the 'reed' in Reedsburg, one used book at a time!"

SUMMER HOURS • Monday - Friday 9 am - 5 pm; Saturday 9 am - 4 pm
WINTER HOURS • Monday - Friday 12 - 5 pm; Saturday 9 am - 4 pm

Restorative Senior Foot Care

- Relaxing Foot Bath
- Trim & File
- Reduction of Nail Thickness
- Callus Relief
- Soothing Lotion Massage

Gift Certificates

MANICURES & PEDICURES ALSO AVAILABLE

Toasty Toes & Nails

Open Tuesday thru Saturday • 126 S. Church St.

608-649-TOES (8637)



OUR SITES

- ✓ RV & Camper Site
- ✓ Primitive Tent Sites
- ✓ Electricity
- ✓ Kayak/Canoe Port
- ✓ Open Space
- ✓ Bathhouse with Showers - FREE

RICHLAND COUNTY CAMPING

SO MUCH TO DO & SEE!

Kayaking & Canoeing
Local Shops and Eateries
ATV/UTV Routes
Bicycling Routes
New Outdoor Pool & Lazy River
Parks
Orchards, and so much more!

Call Carla @ 608.647.6859 to reserve a spot or immediate needs @ 608.553.2813 • <https://fair.co.richland.wi.us/camping/>



Julie Cairns
State Farm®

172 S MAIN ST. • RICHLAND CENTER, WI
608.647.3632 • JULIECAIRNS.COM

Exploring RICHLAND CENTER

the annual Center Color Fest, Wheels of Time, and Canyon of Lights Parade, during the weekend of October 1-3. The gorgeous Rotary Lights in the (Krouskop) Park, will open in late November.

For year-round fun, lace on some roller skates at Galaxie Skate Center, 1215 E. Haseltine Street, Richland Center (608-647-4515).

Arguably the crown jewel of Richland Center is the Frank Lloyd Wright-designed A.D. German Warehouse, located at 300 S. Church Street. Tours are available by appointment, by calling 608-649-1915. Tours are available on Sundays, from May through October, 11:00 a.m.-3:00 p.m. Tours begin at quarter past the hour and last 45 minutes. It is best to book in advance. The Warehouse, considered to be one of Wright's most important structures, is undergoing a massive renovation project.



TRAIN RIDES

ALL
ABOARD!

RIDE INTO THE PAST with a 55-minute round-trip journey aboard century-old train cars.

DISCOVER the rich history of railroading through a museum filled with restored locomotives, railcars exhibits, a gift shop, and more!

OPEN SATURDAYS & SUNDAYS May 8–Oct. 17

DEPARTURES at 11am, 1pm, & 3pm*

MUSEUM HOURS 9:30am–5pm on days trains operate

*Departure times differ during some special events.

Easily reserve your tickets online at www.MidContinent.org

FARES

TRAIN RIDES

Adult \$22 | Senior (62+) \$20 | Child (3-15) \$12

Onboard dining offered on select dates (requires reservation).

MUSEUM ADMISSION FREE!



608-522-4261 | 800-930-1385

www.MidContinent.org

Located in North Freedom, WI

40 minutes from Spring Green
50 minutes from Richland Center

Near to many Wisconsin Dells-area attractions!



MID-CONTINENT RAILWAY MUSEUM



Exploring SPRING GREEN

Spring Green is a beautiful small town nestled among the hills of Southwest Wisconsin's Driftless Region. It is also surrounded by world-class attractions which include The House on the Rock, American Players Theatre, and renowned architect Frank Lloyd Wright's summer home, Taliesin.

The House on the Rock recently got a boost of recognition when it was featured in the Starz channel's fantasy series "American Gods." However, a vast multitude of people had already visited it in the decades since its creation in 1960. On a self-guided tour, you can explore unique collections, including the world's largest carousel, a 200-foot sea creature, automated music machines and much more. The House on the Rock is located at 5754 State Road 23, Spring Green (608-935-3639). It's open March through November, with special hours at Christmastime. If you've ever wondered whether the dolls come alive at night you can find

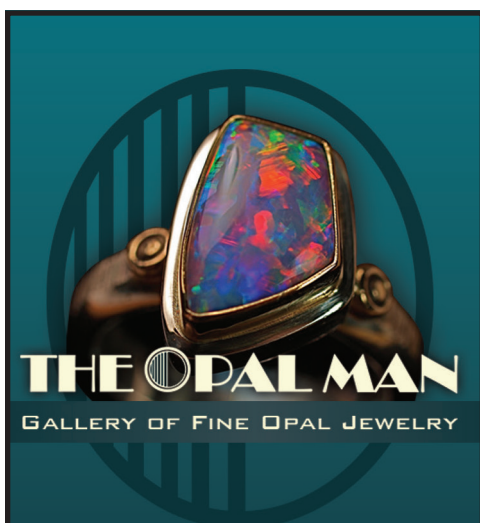


out by attending the Dark Side of the House at night. You will stroll down the walkway of the macabre and see the carousel in a whole new light. You will travel through the Devil's Throat and wander through the mysterious maze before escaping, only to be greeted by the Four Horsemen of the Apocalypse.

American Players Theatre (APT) is a professional theater located just outside Spring Green. Situated on 110 acres of hilly woods and meadows, APT has two theaters, the newly renovated 1,089-seat outdoor amphitheater and the 201-seat indoor Touchstone Theatre. From June through November, APT produces plays in rotating repertory.

experience every minuscule change of expression in ways that aren't possible even in the Touchstone. So spread your picnic blanket in the living room, pour a beverage of choice and prepare for a new kind of APT experience. APT at Home plays will open 7 to 10 days after the first in-person performance, and close when the live version closes. Your one-time admission is viewable any time during that window. Simply buy a ticket, click the link they send and click the Watch Now button. American Players Theatre is located at 5950 Golf Course Road, Spring Green (Box Office 608-588-2361, Administration 608-588-7401).

Taliesin is the home, studio, school, and 800-acre estate of Frank Lloyd Wright (1867-1959). Located in the Driftless Region of southwestern Wisconsin near Spring Green, Taliesin is the name of Wright's home as well as the estate that includes buildings from nearly every decade of Wright's career from the 1890s to the 1950s. Taliesin has a commanding presence in



137 S. Winsted Street • P.O. Box 148
Spring Green, WI 53588
608.588.9317

www.TheOpalMan.com

10 AM - 5 PM

Closed Tuesdays and Sundays



**SPRING GREEN'S
HIDDEN TREASURE**



With annual attendance of over 100,000 and an annual budget in excess of \$6 million, APT ranks as the country's second largest outdoor theater devoted to the classics. Play from the comfort of home! APT is offering an option to watch the plays virtually this season as an alternative (or addition) to coming to see them in Spring Green. Unlike the Zoom readings of this past season, these are fully produced recordings of fully staged plays; as close as you can get to watching in the theater. On the other hand, seeing the actors work their magic on screen brings a new degree of intimacy to their performances, allowing you to hear every word, and

Jones Valley, the land along Wisconsin River where Wright's Lloyd Jones ancestors settled in the 1860s after emigrating from Wales 20 years before. Taliesin was named in honor of his Welsh heritage: the name of a Druid bard, Taliesin literally means "shining brow." Its many wings and terraces reach out to frame the crown of the hill, embracing the site and standing as "brow." Taliesin is designated as a National Historic Landmark (1974) and inscribed as part of a UNESCO World Heritage Site (2019). Taliesin was the principal residence of Wright, and the valley was his inspiration and laboratory for architectural designs

Exploring... SPRING GREEN



and innovation. Taliesin in its three iterations (1911, 1914, 1925) and its landscape are considered the most complete embodiment of Wright's philosophy of organic architecture. The Taliesin residence is the heart of a series of buildings that Wright designed for himself and his family members across the estate: Romeo & Juliet Windmill (1896), Hillside Home School (1903), Tan-y-Deri (1907), Hillside Drafting Studio (1932), Midway Barn (1949), Hillside Theater (1952), and the Frank Lloyd Wright Visitor Center (1967). Taliesin Preservation Frank Lloyd Wright Visitor Center, 5607 County Road C, Spring Green (608-588-7900).

Spring Green and its environs is a mecca for artists and artisans, exemplified by Shake Rag Alley Center for the Arts, located at 18 Shake Rag Street, Mineral Point (608-987-3292). Shake Rag Alley Center for the Arts provides educational experiences in visual, performing, and literary arts for adults and children; cultivates the creativity that thrives in its rural community; and preserves its historic buildings and rustic campus. Its instructors are drawn from a wealth of talented teachers, including nationally known artists from across the country and across the street. They are innovative craftsmen and artists who enjoy trying new techniques and love sharing what they do with their students. Their workshops include blacksmithing and welding; business of art; ceramics and pottery; creative writing; culinary arts; fiber arts; glass; home and garden; jewelry; literary events; mixed media; painting and 2D art; paper and book arts; printmaking; rustic arts and nature crafts; virtual workshops; and a youth program. Its monthly events include Antiracism Book Club; Driftless Poets; Literary Events; and Women's Art Party. Its retreats include Jewelry Boot Camp; Writing Retreat; Woodlanders; and Art Adventure.

Jewelry lovers will also want to take time to visit The Opal Man, located at 137 S. Winsted Street in Spring Green (608-588-9317). The Opal Man is the only all-opal store in the USA. The shop offers fine opals and opal jewelry in silver and gold, and specializes in high quality Australian opal varieties, consisting of black, Koroit, boulder, crystal, light, white, opal doublets, treated matrix, and opal specimens. They also carry Mexican and Ethiopian opals. Their master cutters cut and polish rough opal material in the shop and work with customers to create custom jewelry. The staff enjoys sharing their knowledge and experience with customers, who often have questions about opals.

Fireside Campground

Cabin That Sleeps 10
90 Sites
Both Full Hook Up & Water
& Electric Sites Available
Mostly Pull Through Sites

33533 Jay Lane
Lone Rock, WI
608-583-5111
GPS: 43.2134-90.2717
Firesidecampground.com

Overnight, Weekly, Monthly & Seasonal Sites Available.

Full Hook-up Available!



Seasonal Sites Available
at Reasonable Rates
Internet Throughout the Park
Clean Bathrooms, Free Showers
Large Pavilion,
Great for Large Groups
Great Playground,
Bball Court, Carpetball
Foam Party & Ice Cream
Social on Holiday Weekends
Wisconsin River &
Boat Launch within 1 mile
Groups Welcome

Season 4-2 to 11-7
Cabin Rentals
Park Model Rentals
Hunters Welcome
Motorcycle & Pet
Friendly
Laundry Facilities
14 Mile Pine River
Bike Path Across
from Campground
Fishing Nearby
Online Reservations
Mostly Pull Through Sites

Viroqua is an accredited Main Street America city. Its downtown is listed on the Wisconsin and **National Register of Historic Places**. Viroqua was dubbed "The Town That Beat Walmart" by **Smithsonian Magazine** in 1992 because it fostered businesses that co-exist with the retail giant. The city and its nonprofit chamber of commerce, the Viroqua Chamber Main Street, actively promote small business development through several state and federal programs.^[18] One noteworthy program that has kept downtown storefronts occupied has been the Pop-Up Shop Initiative, which allow entrepreneurs to use a space downtown rent-free for the holiday season.

This city embodies a unique way of life through the celebration of our rich rural history, thriving arts community, and burgeoning local business. With open arms, we invite you to explore what Viroqua's historic downtown district, outlying ridges, creeks, valleys, and rolling hills have to offer!

Whether you're enjoying the lush surrounding valleys or our historic downtown district, Viroqua offers enough variety to occupy even the most restless visitors with entertainment, shopping, dining, and natural beauty begging to be explored. Start the day in a cozy bed and breakfast and unpack your hiking boots, mountain bike or cross-country skis, we've got trails to accommodate you. When you're done exploring, trek back into town and shop around a little at our farmer's market before a meal downtown and a show at one of our theatres. And that's just your Saturday.

AREA ATTRACTIONS

Take a trip outside the city to experience all that the Viroqua area has to offer. Between our expansive local parks and nature reserves, vistas fit for a postcard and history remembered in several memorials and museums, your visit won't be easily forgotten.

Viroqua is blossoming with artists from all over the world. We have a strong network of people working on all subjects from photography, clothes design and production, painting, theater, dance, film, writing and everything in between. Seriously. This goes beyond the great galleries and events that occur. Viroqua hosts an annual Harvest Parade and Festival in the fall.

During the warmer months, and often in the cooler months as well (this is Wisconsin, after all), Viroqua rolls out its colorful farmer's market every Saturday morning. Fresh fruit, vegetables and other food delights

are rolled out, as well as a plethora of artistic endeavors ranging from Amish hand-woven baskets, furniture and quilts, to freshly painted gourds, one-of-a-kind jewelry to body art (henna is the best!).

FARMER'S MARKET

It is fortunate to live in a region that has an abundance of local family farms who grow and raise such phenomenal goods. The Viroqua Farmers Market is hosted every Wednesday and Saturday from May through October at the Western Technical College parking lot. The market hosts more than 50 vendors each week, all of whom are within a 100 mile radius of Viroqua. These farmers, growers, bakers, crafters and artists are eager to tell you all about the products and goods they produce. They are a producer only market, with edible delectable and artisan wares. You can find organic produce, maple syrup, canned goods, honey, soap, pork, beef, lamb, bison, jewelry, art, paintings, furniture, fresh flowers, dried flowers, bird houses, Amish rugs and quilts, mushrooms, baked goods, books, quilted items, lamb hides, lotions and winter gourds.

WILD WEST DAYS

The third weekend in August will bring you the wild west to life. The 1880's Bustling Boom Town with many authentic buildings is held at the Vernon County fairgrounds. It has a rodeo, vendors, concert, parade, hog wrasslin' and many events throughout the weekend. Come join us for a fun weekend full of the old and new west!

VERNON COUNTY FAIR

Fairgoers can take in a variety of activities and exhibits during this five-day event which is held in September. This event showcases products like artifacts, farm products, livestock feed and management machines, masks and hoods, DIY kits and tool kits, home utility products, garden and home improvement tools, sowing and farm work clothes and safety gear cleaning and moving apparatus, moving machinery, building tools, time cutting, cattle management equipment, organic food, bike and vehicle maintenance apparatus, fencing tools and equipments etc. in the Industrial



Quilt Basket 'N' Creations

Over **2,500 bolts** of fabric!

Quilting supplies, yarn, long arm quilting, shop hops and much more!

WHAT'S COMING UP!

WE ARE PARTICIPATING

in the Wisconsin Shop Hop

June 5th - June 27th

Mon, Tue, Wed, Fri: 9-5:30 • Thur: 9-7:30 • Sat: 9-4 • Sun: 12-4

www.wisconsinshophop.com

10th Anniversary Celebration

extension until July 17th, regular store hours

Mon, Tue, Wed, Fri: 9-5 • Thur: 9-7:30 • Sat: 9-4 • Closed Sunday

CHRISTMAS IN JULY SALE • Watch for Dates!



www.quiltbasketncreations.com



117 F S Dr, Viroqua, WI • (608) 637-7002

Viroqua food coop

609 N Main Street, Viroqua WI 608.637.7511

Everyone is welcome to shop!

- **Open daily 7am-8pm**
- **Local produce, meat, cheese and more**
- **Personal pizzas & pizza by the slice**
- **Burritos, soup, & sandwiches**
- **Whole roasted chicken, salads, desserts**
- **Espresso drinks, smoothies**
- **Fresh baked goods made daily**
- **Artisan beer, wine & cheese**
- **Bicycle rack & fix-it station**
- **Outdoor seating**



good. local. food.

At Viroqua Food Co+op, fresh, delicious food is just the beginning. Stop in for a hot sandwich, burrito or a slice of pizza. Take home heat 'n serve meals of your favorite comfort foods, or get a quick bite to go from our grab-n-go section. Savor a cup of locally roasted coffee or a freshly-made smoothie. Discover the taste of the Driftless. There is something for everyone at the Co-op!

Visit www.viroquafood.coop/deli to see what's for breakfast, lunch or dinner

discover local





\$5 OFF

Any purchase of \$25 or more

Viroqua Food Co+op
609 N. Main Street
Viroqua, WI

Expires 12/31/21
One coupon per visit.

TRI

Exploring



VIROQUA

Products, Agriculture and Forestry, Gifts and Handicrafts industries. Highlights of the fair, include an antique and farm tractor pull Thursday night; a modified farm tractor and truck pull Friday night; draft horse show, harness racing and demolition derby Saturday; and harness racing Sunday.

ACCOMMODATIONS

Whatever you're looking for in your getaway, Viroqua offers an array of lodging options. Whether it's a romantic bed and breakfast, cozy log cabin, historic hotel, suite, vacation home, comfortable camping or family- and budget-friendly option, it's all here. There is something for everyone here

in Viroqua. Everything for the rugged outdoor enthusiasts to those who love food, music and cultural experiences. Come and experience all Viroqua has to offer, no matter what the season. For memories that will last a lifetime you won't be disappointed when visiting Viroqua.

Exploring



WESTBY

Velkommen to Westby Wisconsin... Where Old Traditions and New Opportunities await your visit!

Westby celebrates its Scandinavian heritage by hosting the annual Syttende Mai festival with music, traditional arts and activities, parades, heritage tent, and entertainment. The winter attraction event is the Snowflake Ski Jumping International Tournament. Watch jumpers fly through the crisp air in Timber Coulee.

Travel through the countryside surrounding Westby and discover the rugged hills, scenic farms, and state parks to see why vacationers return to this ideal place time and again season after season. Take in the trout streams that wind through the coulees while being on the lookout for round barns or stop at a shop and studio ran by a local artist. Be transfixed with the fall leaves on the country touring roads or visit the Amish community for many of their handcrafted goods.

NORWEGIAN HISTORY

The name "Westby" is a Norwegian name and literally translates to "Western city".

Westby was named after general store owner and Civil War Union soldier Ole T. Westby of Biri, Norway, where many of the city's Norwegian-American settlers originated. Westby Coon-Prairie Lutheran Church in Westby was established in 1851. The Chicago, Milwaukee, St. Paul and Pacific Railroad began servicing Westby and surrounding townships in August 1879, and the La Crosse and Southeastern Railroad began service to the area in January 1905, though both railroads have long since ceased local operations. The Westby depot was torn down in 1970.

QUAINT SHOPS & EATERIES

Your shopping experience is a revelation of Norway's most treasured gift lines. Over 40 years of tradition has been to always bring you the finest selection of Scandinavian gifts to visitors. There are plenty of unique restaurants and local taverns to also grab a bite to eat while you are out and about.

WESTBY CREAMERY

As a farmer-owned cooperative, and producer of cultured dairy food products and hard cheeses for over 110 years, Westby Cooperative Creamery has a unique perspective on the dairy industry; from farm-to-fridge and everything in between.

The dairy business is a daily business. Cow care is 24/7/365, with cows being fed and milked at least twice a day, every day of the year. That's how everything starts at Westby Cooperative Creamery, with fresh milk delivered daily by our member-owners to produce the highest quality and best tasting dairy food products.

Westby Cooperative Creamery is unique in many ways, with one distinction being the milk that our patron-members produce.

CREAMERY CHEESE STORE



CALL TODAY!
(608) 634-3181

FOLLOW US ON
FACEBOOK

Cheeses • Meats • Party Trays
Gift Boxes • Dips • Candies
Organic Dairy Products and More!

Stop by for a visit today!

OPEN 7 DAYS A WEEK

206 SOUTH MAIN ST., WESTBY, WI

Events in the TRI-STATES



BAGLEY

MAY

29: French Toast & Pancake Drive-Thru Breakfast at the Fire House from 7 – 10:30 a.m.

JULY

3: Thunder in the Valley Bull Riding at Bagley Community Park. Mutton Busting at 6:30 p.m. Rodeo at 7 p.m. Half-time Show TBA. Fireworks after rodeo.

BELMONT

MAY

30: Annual Fireman's Dance at Belmont Fire Station from 7 p.m. to midnight.

JUNE

4 & 5: Citywide Garage Sales.

SEPTEMBER

17 - 19: 107th Belmont School & Community Fair.

BLOOMINGTON

JULY

23-25: Blake's Prairie Jr. Fair.

BOSCOBEL

MAY –

OCTOBER 23:

Farmers Market at Depot Park on Saturdays from 8 a.m. to noon.

MAY –

OCTOBER 30:

Boscobel Depot open for tours on Saturdays from 8 a.m. – 2 p.m.

JUNE

5: Smoke in the Valley. Antique Club Grounds.

Smoking Gun Showdown at Kronshage Park from 7 – 11 p.m.

11 - 13: Hall of Fame Softball Tournament.

19: Depot Day at Boscobel Depot Museum.

JULY

3: Chicken Q from 10 a.m. – 3 p.m. and Music in the Park from 6 – 8 p.m. at Kronshage Park.

4: Boscobel Fourth of July Celebration. Firecracker Run at 9 a.m. Parade at noon.

Jammin' on Wisconsin.

AUGUST

8: Music in the Park from noon to 4 p.m.

14: Antique Tractor Show at Antique Club Grounds.

29: Drive-In/Fly-In Breakfast.

SEPTEMBER

11: Taste of Boscobel.

OCTOBER

8 - 10: Big River Long Rifles Rendezvous at Kronshage Park.

CASSVILLE

MAY

Cassville Car Ferry begins operation. Daily from 10 a.m. – 8 p.m. Info line (608) 725-5180.

JUNE

4 - 5: Citywide Garage Sales.

5 - 6: Free Fishing Weekend in Wisconsin Waters.

11: Night in the Park.

19: Cassville Fire Department's Chicken BBQ.

25: Cassville Rescue Squad Supper & Dance.

JULY

9: Night in the Park.

17: Lions Day in the Park/UTV Ride.

AUGUST

7: American Legion Tonnage Tournament.

13: Night in the Park – Potosi Band.

SEPTEMBER

4: Cassville Car Cruise.

11: Cassville Park Preservation Party.

19: St. Charles Fall Festival.

CUBA CITY

JUNE

18 & 19: Truck & Tractor Pull at Splinter Park Pull Grounds.

DARLINGTON

MAY –

OCTOBER:

Farmers Market at Festival Grounds on Saturdays from 8 a.m. to noon.

JUNE

11 - 13: Canoe Festival. Little League, softball and volleyball tournaments, stock car races, road runs, talent show, craft fair, chicken BBQ, carnival, parade and fireworks. Canoe race Sunday morning.

JULY

4, 11, 18 & 25: Tunes at Twilight at Veteran's Memorial Park at 6:30 p.m.

14 - 18: Lafayette County Fair at Lafayette County Fairgrounds.

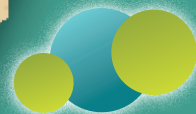
SEPTEMBER

11 & 12 : Pecatonica Valley Antique Days. Flea market, antique tractors and machinery displays at Lafayette County Fairgrounds.

OCTOBER

23: Witches, Warlocks & Wine Walk.

Events in the TRI-STATES



15: Corey Taylor at Five Flags Arena at 7:30 p.m.

21: Chamber Open Annual Golf Outing at Dubuque Golf & Country Club from 11 a.m. – 8 p.m.

27: Johnnie Walker at Promiseland Winery in Guttenberg at 9 a.m.

28: 18th Annual Golf Classic at Thunder Hills Country Club from 8 a.m. – 4 p.m.

JULY

3: Styx at Five Flags Arena at 6 p.m.

3: The Fireworks Spectacular! Salute to Heros Air Show from 5:30 – 8:30 p.m. U.S. Army Golden Knights Parachute Jump at 9 p.m. Fireworks at dusk.

25: Johnnie Walker at Promiseland Winery in Guttenberg from 2 – 5 p.m.

27 – August 1: Dubuque County Fair.

AUGUST

5: Taste of Dubuque at 305 E 3rd Street at noon.

7: Dubuque Cub Scout Day Camp at 3342 John Wesley Drive at 4 p.m.

22: Johnnie Walker at Promiseland Winery in Guttenberg from 2 – 5 p.m.

29: Blackberry Smoke at Five Flags Arena at 8 p.m.

SEPTEMBER

4: The Texas Tenors at Five Flags Arena at 8 p.m.

19: Johnnie Walker at Promiseland Winery in Guttenberg from 2 – 5 p.m.

FENNIMORE MAY

31 - Labor Day: Fennimore Historical Railroad Society open Thursday – Monday from 10 a.m. – 4 p.m. \$1 train rides.

JUNE

14 - Labor Day: Fennimore Doll and Toy Museum open Thursday – Monday from 10 a.m. – 4 p.m. Free.

JULY

13: Fennimore Area Chamber of Commerce Annual Chicken BBQ and Community Awards at 4:30 p.m. at Memorial Building.

31: Southwest Wisconsin Tractor and Equipment Ride at 9 a.m. at Lafayette Street and Switzer Road in Business Park.

AUGUST

28: Fennimore School and Community Fair Tractor Show at Fennimore High School.

SEPTEMBER

25: Annual Heritage Day at Fennimore Historical Railroad Museum from 10 a.m. – 4 p.m. \$1 Train Ride.

25: Fennimore FFA Pancake Breakfast at Memorial Building from 7 a.m. to noon.

25: Annual FFA Alumni Farm Toy Show and Sale at Memorial Building from 9 a.m. – 2 p.m.

HAZEL GREEN

JULY

3: Army Golden Knights parachute jump at Southwestern School football field at 11 a.m.

LANCASTER

JUNE

4 - 6: Little Britches Rodeo.

19: Brews & Blues. Music, beer, wine and food from 3 – 8 p.m.

25: Jaycee Fireworks at the fairgrounds. Rain date is June 27.

26: ATV/UTV Drag Race/ Demo Derby at Grant County Fairgrounds.

JULY

15: Night on the Square. Games, food, dancing and more from 5–9 p.m.

AUGUST

15 - 22: Grant County Fair at the fairgrounds. Details at www.grantcountyfairwi.org.

27 - 29: Lancaster Regional Rodeo at Grant County Fairgrounds.

SEPTEMBER

TBD: Sip 'n Shop. Self-guided wine tasting tour from 3–6 p.m.

18: Annual Grant County Cancer Coalition Fall Fundraiser at Grant County Fairgrounds.

25: Alzheimers Walk at Grant County Fairgrounds.

OCTOBER

2: Harvest Festival Parade.

3 - 9: National 4-H Week.

22: Elderfest at Grant County Fairgrounds.

LIVINGSTON

JUNE

5: Pyrotechnic's Demonstration, Kastner's Fireworks at Industrial Park from 7 p.m. – dark.

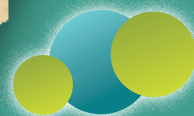
24-26: Community Wide Garage Sales from 8 a.m. – ??? **25:** Brat Sale from 11 a.m. – 1 p.m.; Old Time's Fast Pitch Game at 6 p.m. **26:** Family Movie (free) at Livingston Free Methodist Church yard at dusk.

27: Livingston Festival, Memorial Park from 10 a.m. – 4 p.m. Parade at 1 p.m. 5th Quarter Show at 2 p.m. Old Fashion Ice Cream Social at 3:15 p.m.

JULY

24: Steak Sandwich Lunch at Community First Bank from 10:30 a.m. until gone. Iowa and Grant County Cattlemen serving.

Events in the TRI-STATES



MINERAL POINT

MAY – OCTOBER:

Mineral Point Farmers Market every Saturday under the water tower from 8:30 – 11:30 a.m.

JUNE

11: Jammin' on the Porch at Orchard Lawn from 6 – 8 p.m.

JULY

4: 40th Annual Gettin' the Lead Out Historic Run at Soldiers Park at 8 a.m.

4: Fourth of July Parade on High Street at 11 a.m.

4: July 4th Lunch in the Park at Water Tower Park from noon to 2 p.m. Live Music.

9: Jammin' on the Porch at Orchard Lawn from 6 – 8 p.m.

29: Chambers Golf Outing from noon to 4 p.m.

AUGUST

11 - 14: Paint the Point. Sale on Saturday at the Masonic Temple from 10 a.m. – 6 p.m.

13 & 14: Citywide Garage Sales.

13: Jammin' on the Porch at Orchard Lawn from 6 – 8 p.m.

20 & 21: Blues & Roots Festival at Orchard Lawn.

SEPTEMBER

2 - 6: Iowa County Fair.

10: Jammin' on the Porch at Orchard Lawn from 6 – 8 p.m.

24 - 26: Cornish Festival.

MONTFORT

JUNE

4 - 6: Montfort VFW Post #9298 Annual Big Days. Friday: Kickball tournament at 6 p.m. Flag disposal and dedication ceremony at VFW Shelter at 7 p.m. Swing Crew Band from 8 p.m. - midnight. Saturday: Volleyball tournament at 8 a.m. Red Bandana Ride at VFW Shelter leaves at noon. Addison Hill Band from 5-10 p.m. Sunday: Chicken BBQ at 10 a.m. and pie stand. Parade at 2 p.m. All Weekend: Citywide garage sales, Boy Scouts concession stand at ball diamond. Brats, burgers and beer tent at VFW Shelter. 50/50 Raffle at VFW Shelter.

PLATTEVILLE

MAY – OCTOBER 30:

Platteville Summer Farmers Market on Saturdays from 8 a.m. to noon at City Park.

JUNE

3: Music in the Park – Wundo Band at City Park from 6 – 8 p.m.

10: Music in the Park – Boxcar Social at City Park from 6 – 8 p.m.

17: Music in the Park – Ensemble Nouveau at City Park from 6 – 8 p.m.

18: Platteville Regional Chamber Annual Golf Outing.

21: Make Music Platteville at a variety of Platteville locations from 8 a.m. – 8 p.m.

24: Music in the Park – Point Five at City Park from 6 – 8 p.m.

JULY

1: Music in the Park – Gary Beal Band at City Park from 6 – 8 p.m.

4: Patriotic Program at City Park at 10 a.m.

4: Heritage Day at the Mining & Rollo Jamison Museums from 10 a.m. – 4 p.m.

4: Fourth of July Celebration at Legion Park. Fireworks at dusk.

8: Music in the Park – Ralph Kluseman at City Park from 6 – 8 p.m.

15: Music in the Park – City Band at City Park from 6 – 8 p.m.

17 - 25: Platteville's 23rd Annual Hometown Festival Week. 17th – Farmers Market 8 a.m. to noon. Southwest Music Festival on 2nd Street from 5 p.m. to midnight. 19th – An Evening in Katie's Garden. 22nd – 23rd Annual Party in the Park "Salute to Volunteers" at City Park at 5:30 p.m. 22nd – Music in the Park, Ken Killian's Classic Big Band from 6 – 8 p.m. at City Park. 23rd – Fourth Annual Trinity Episcopal Church's Fish

Boil from 5 – 7 p.m. 24th – Craft & Vendor Fair at City Park from 8 a.m. – 2 p.m. 25th – Southwest Christian Music Festival at City Park.

29: Music in the Park – Harmonious Wail at City Park from 6 – 8 p.m.

AUGUST

5: Music in the Park – Boogie Monster at City Park from 6 – 8 p.m.

12: Music in the Park – Honey Pies at City Park from 6 – 8 p.m.

19: Music in the Park – Adam Bartels at City Park from 6 – 8 p.m.

SEPTEMBER

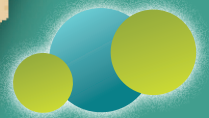
10 - 12: 23rd Annual Historic Re-enactment at Mound View Park.

10 - 12: Annual Dairy Days Celebration. Friday: Flea Market at 8 a.m. at Legion Park. Carnival Rides and Vendors at 5 p.m. Tri-County Mini Rod & Fantasy Truck Pulls at Legion Park at 6 p.m. Saturday: Flea Market at Legion Park at 8 a.m. Parade on Main Street at 9:30 a.m. Carnival Rides and Vendors, Dairy Cattle Show, Jr. and Open Exhibits at Legion Park at noon. ECIPA Tractor Pulls at Legion Park at 6 p.m. Sunday: Flea Market at Legion Park at 8 a.m. Carnival Rides and Vendors, Dairy Goat Show at Legion Park at noon.

17: Miner's Ball Fundraiser for The Mining & Rollo Jamison Museums at 5 p.m.

18: Ben's Hope Run/Walk.

Events in the TRI-STATES



OCTOBER

- 2:** Day on the Farm at UWP Pioneer Dairy Farm from 10 a.m. – 1 p.m.
- 18 - 23:** UW-Platteville Homecoming. Saturday: Parade on Main Street at 10 a.m. M Lighting at 9 p.m.
- 30:** Katie's Halloween Garden at Katie's Garden. Halloween display up 22 - 31.

POTOSI AUGUST

- 8:** Potosi Area Annual Fireman's Catfish Festival at Potosi Fire and Rescue Building.
- 28:** Potosi Brewery Brewfest at Holiday Gardens Event Center.

SEPTEMBER

- 19:** Masonic Lodge Annual Car Show at Holiday Gardens Event Center.

Opens at 8 a.m. Judging at noon.

OCTOBER

- 9:** Masonic Lodge Annual Fish Fry at Masonic Lodge from 4:30 - 7:30 p.m.
- 10:** Davis Memorial UCC Chicken and Biscuit Dinner from 11 a.m. – 2 p.m.
- 17:** Port of Potosi Breweriana & Flea Market at Potosi Brewery parking lot from 9 a.m. – 3 p.m.
- 24:** SS. Andrew-Thomas Parish Fall Festival at SS. Andrew-Thomas Catholic School.

RICHLAND CENTER

- MAY – OCTOBER:** Richland Area Farmers Market.

JUNE

- 10 - 13:** Wisconsin State High School Rodeo Finals at Richland County Fairgrounds.
- 12:** June Dairy Days Rodeo/Parade.

SEPTEMBER

- 8 - 12:** Richland County Fair. Details at www.fair.co.richland.wi.us/.

SPRING GREEN

- MAY – MID OCTOBER:** Spring Green Area Farmers Market.

JUNE

- 3 – November 20:** American Players Theatre: An Improbable

Fiction, The Mountaintop, Rough Crossing, An Illiad, Cymbeline and A Phoenix Too Frequent.

AUGUST

- 21:** Spring Green Car Show. Charming downtown Spring Green becomes a huge showcase for prized automobiles.

VIROQUA/ WESTBY

- MAY – OCTOBER:** Viroqua Farmers Market, every Saturday from 8 a.m. – 12:30 p.m.

SEPTEMBER

- 15-19:** Vernon County Fair.

Thank You

We would like to thank the area chambers and city organizations for their contributions to Exploring The Tri-States.

ENJOY

great food
with great friends
in a great atmosphere!



Sandwiches • Salads • Spaghetti • Fettucine
Desserts • Appetizers and more



**CARRY OUT
DRINK BOXES for**

Long Island Iced Teas AND *Strawberry
Blonde*



Beer Garden



**Call for hours for
PICK UP/
CARRY OUTS**

**Hwy. 151 • Platteville
348-7808**

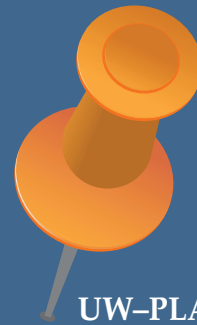


MAKE US YOUR MEETING PLACE . . .

When it's safer to gather
in large groups,
we hope you consider
UW-Platteville
as the meeting location.



UNIVERSITY OF WISCONSIN
PLATTEVILLE



UW-PLATTEVILLE

<https://www.uwplatt.edu/departments/event-services>
608.342.1451



755 WEST MAIN STREET, PLATTEVILLE, WI 53818 | CFA@UWPLATT.EDU | 608.342.1298

<https://www.uwplatt.edu/departments/center-arts>